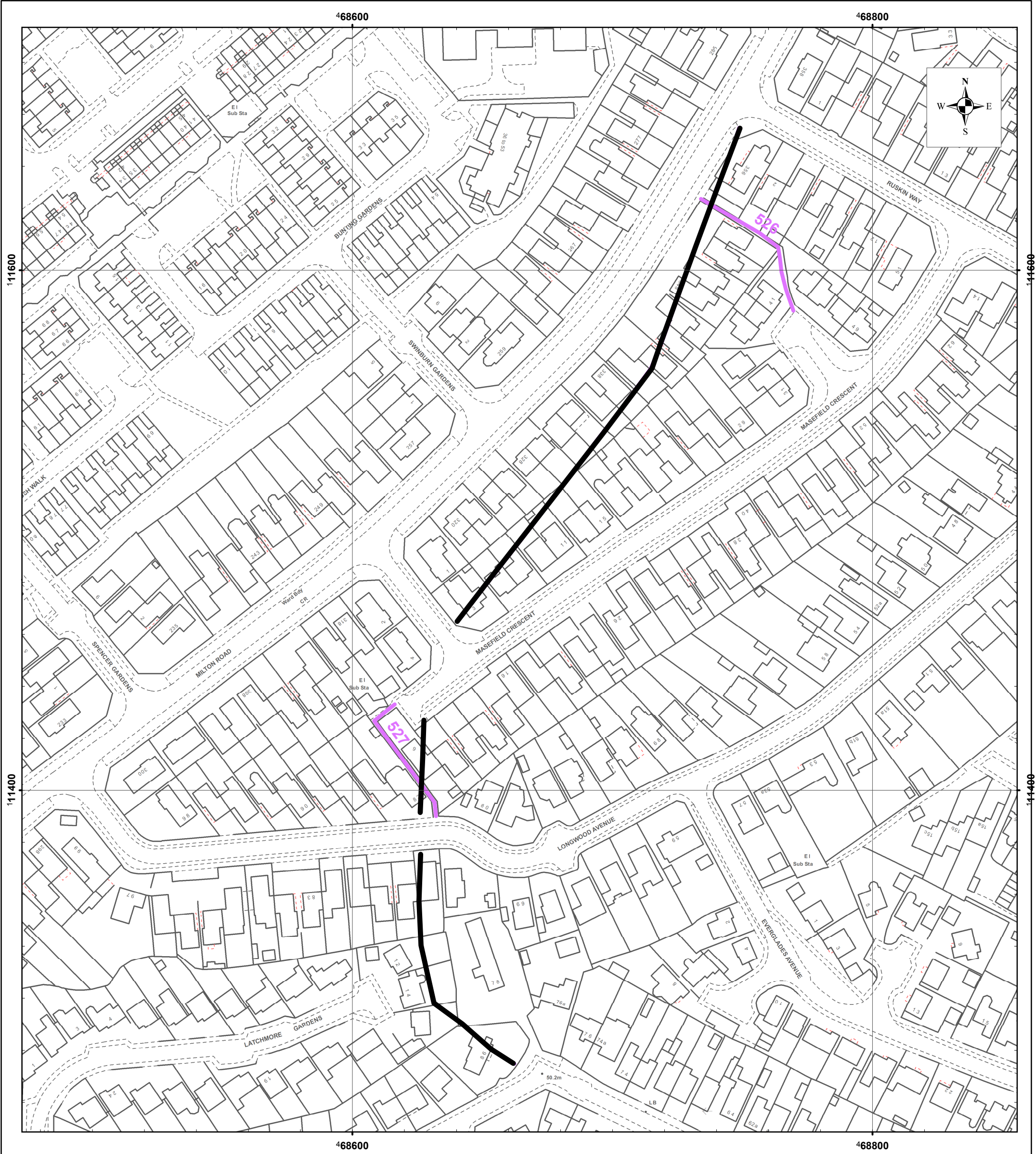


HAMPSHIRE COUNTY COUNCIL

MAP REFERRED TO IN
HAVANT FOOTPATH 9



SCALE 1:4,000
LEGEND

FOOTPATH TO BE
EXTINGUISHED:-



MAP PRODUCED FROM DIGITAL DATA
SUPPLIED BY ORDNANCE SURVEY

THE COMMON SEAL OF HAMPSHIRE COUNTY
COUNCIL WAS HEREUNTO AFFIXED IN THE
PRESENCE OF:-

.....AUTHORISED
.....SIGNATORY

DATE.....

REPRODUCED FROM THE O.S. MAPPING
WITH THE PERMISSION OF THE
CONTROLLER OF HMSO © CROWN.
UNAUTHORISED REPRODUCTION
INFRINGES © CROWN AND MAY LEAD TO
PROSECUTION OR CIVIL PROCEEDINGS.
HCC LICENCE No.100019180 DATE (17.7.2019)

FELICITY ROE,
DIRECTOR OF CULTURE, COMMUNITIES
AND BUSINESS SERVICES, WINCHESTER