

# COVID-19 Weekly Update – 2<sup>nd</sup> November 2020

*Data correct as of 2<sup>nd</sup> November 2020 but subject to revision*

**Compiled and published by Hampshire Public Health**

**2<sup>nd</sup> November 2020**

Page 1



# This report provides information on the COVID-19 pandemic in Hampshire and includes:

- COVID -19 infections – the total numbers of cases, rates within Hampshire’s districts and overall picture across England
- Deaths - total deaths, which also includes those extra deaths above the number we would normally expect in Hampshire, over recent months



# Infections – daily COVID-19 cases in Hampshire showing how the epidemic has progressed over time – the ‘epidemic curve’

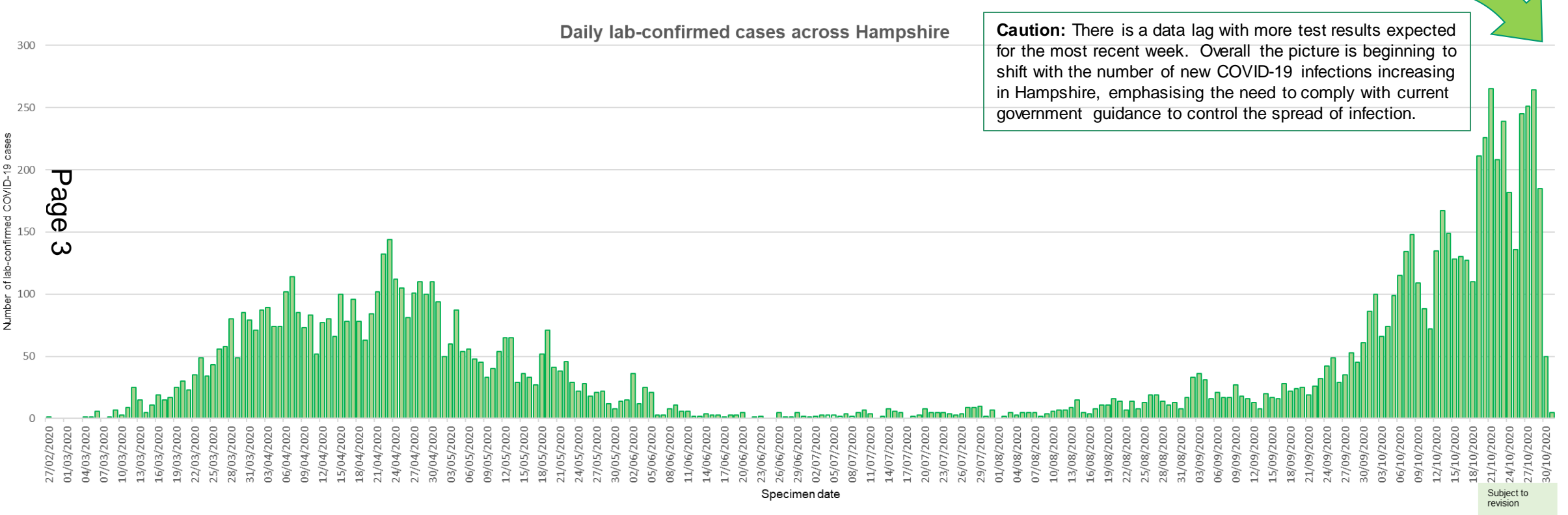
During wave 1 only Pillar 1 testing was available, this included people admitted to hospital and later people living or working in a health or care environment. Widespread community testing (pillar 2) began on 14th July 2020. Due to these different testing strategies it is therefore not possible to directly compare the number and rates of positive tests between wave 1 and wave 2.

Total number of COVID-19 cases



**10,712**

Data only includes those cases which have tested positive



Source: [PHE dashboard](#) (Last updated on 1<sup>st</sup> November 2020)

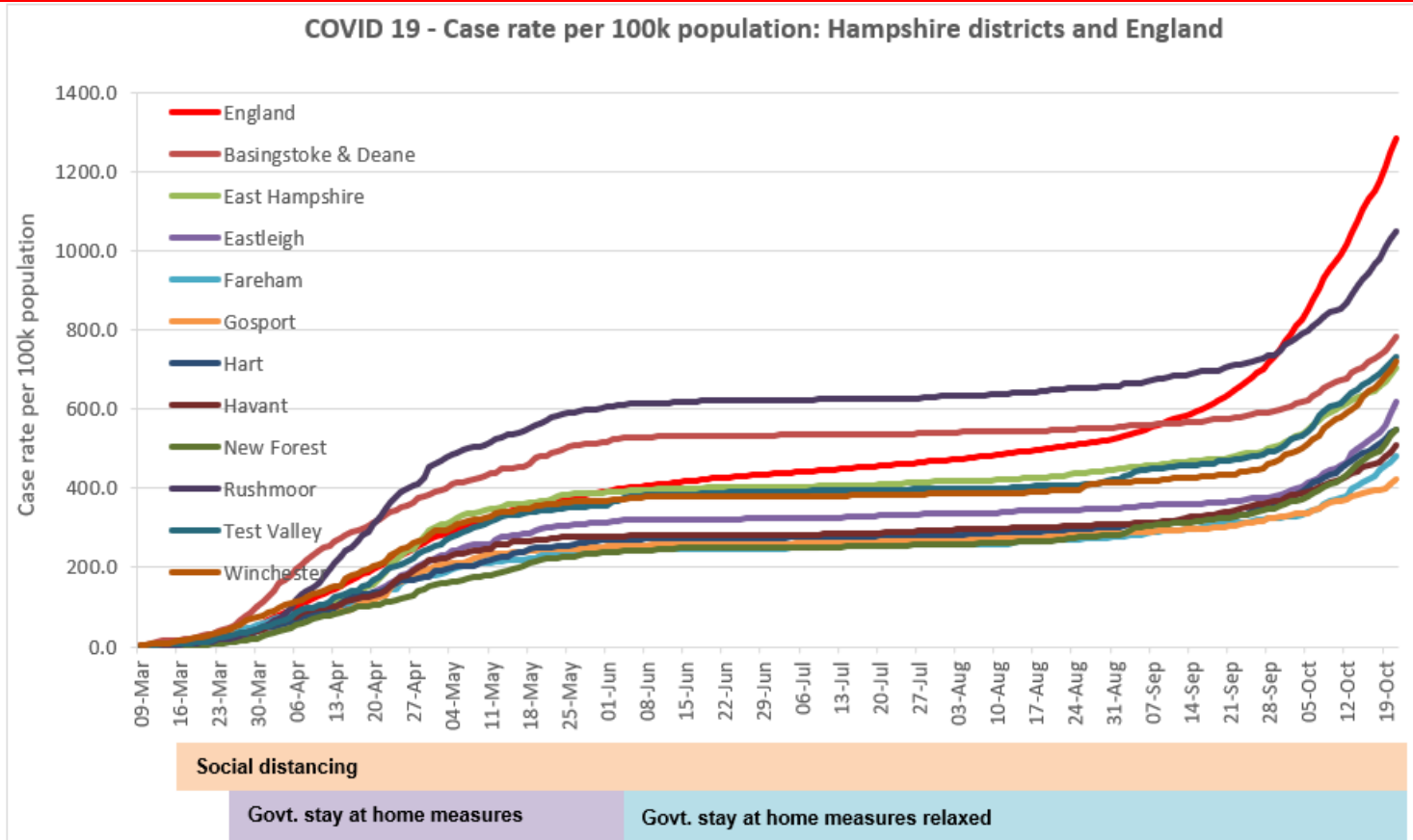
The data now includes all cases, those which have been tested by NHS/PHE laboratories and by the Government's commercial testing partners



# Infection rates – Total cases per 100,000 people across Hampshire Districts

- The trend in the total figures shows that the infection is slowly rising across Hampshire.
- The highest infection rate has been in the Rushmoor district, where it is currently lower than the average infection rates for England.

Page 4



England  
Rushmoor  
Basingstoke & Deane

Source: Data.gov COVID-19 dashboard & ONS MYE 2018

The above chart shows the crude rate of confirmed cases (cumulative) per 100k population for Hampshire districts and England. Data on confirmed cases is from Data.gov COVID-19 dashboard and population data is from ONS (mid year estimates 2018). Case numbers are subject to revisions, especially most recent numbers. Isle of Wight has implemented track and trace from 07/05. **Track and trace service went live in England on 28th May. Data was revised on 2nd July to include pillar 2 lab confirmed cases, as well as pillar 1.**

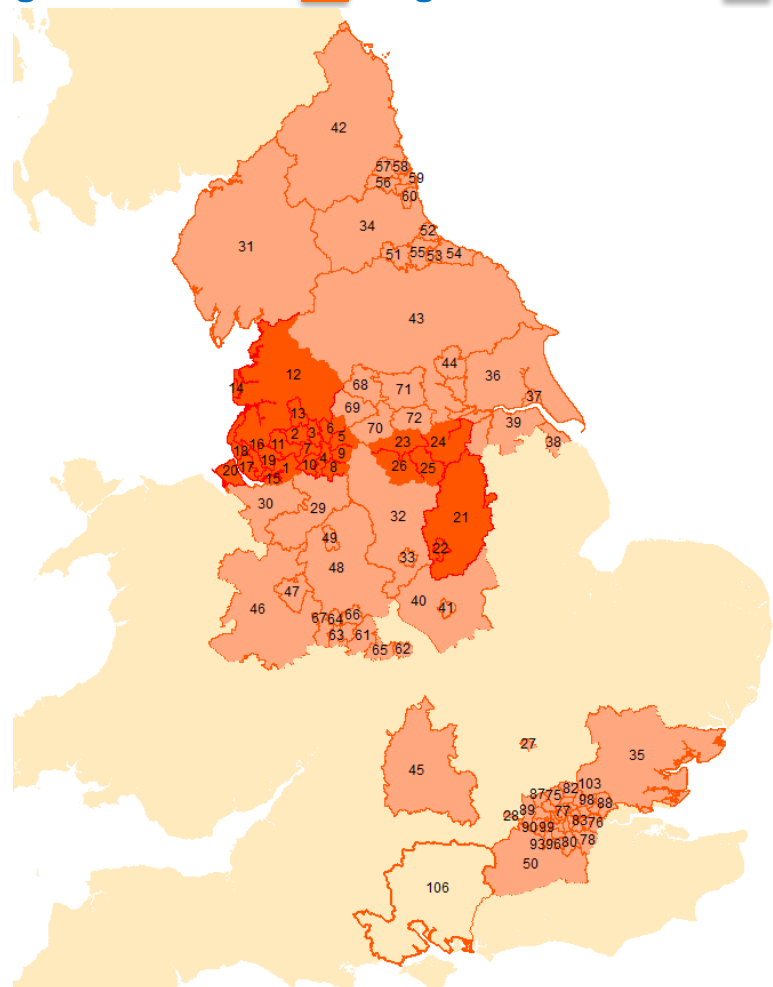


# Local Coronavirus Alert Levels

County and Unitary Authorities in England – Local Coronavirus Alert Level Tier Status – Updated 30<sup>th</sup> October 2020

■ Very High    
 ■ High    
 ■ Medium    
 ■ Hampshire Districts (for location reference only)

Page 5



Location	County/Unitary Authority	Tier Status
1	Warrington	Very High
2	Bolton	Very High
3	Bury	Very High
4	Manchester	Very High
5	Oldham	Very High
6	Rochdale	Very High
7	Salford	Very High
8	Stockport	Very High
9	Tameside	Very High
10	Trafford	Very High
11	Wigan	Very High
12	Lancashire	Very High
13	Blackburn with Darwen	Very High
14	Blackpool	Very High
15	Halton	Very High
16	Knowsley	Very High
17	Liverpool	Very High
18	Sefton	Very High
19	St. Helens	Very High
20	Wirral	Very High
21	Nottinghamshire	Very High
22	Nottingham	Very High
23	Barnsley	Very High
24	Doncaster	Very High
25	Rotherham	Very High
26	Sheffield	Very High
27	Luton	High
28	Slough	High
29	Cheshire East	High
30	Cheshire West and Chester	High
31	Cumbria	High
32	Derbyshire	High
33	Derby	High
34	County Durham	High
35	Essex	High
36	East Riding of Yorkshire	High
37	Kingston upon Hull, City of	High
38	North East Lincolnshire	High
39	North Lincolnshire	High
40	Leicestershire	High
41	Leicester	High
42	Northumberland	High
43	North Yorkshire	High
44	York	High
45	Oxfordshire	High
46	Shropshire	High
47	Telford and Wrekin	High
48	Staffordshire	High
49	Stoke-on-Trent	High
50	Surrey	High
51	Darlington	High
52	Hartlepool	High
53	Middlesbrough	High
54	Redcar and Cleveland	High
55	Stockton-on-Tees	High
56	Gateshead	High
57	Newcastle upon Tyne	High
58	North Tyneside	High
59	South Tyneside	High
60	Sunderland	High
61	Birmingham	High
62	Coventry	High
63	Dudley	High
64	Sandwell	High
65	Solihull	High
66	Walsall	High
67	Wolverhampton	High
68	Bradford	High
69	Calderdale	High
70	Kirklees	High
71	Leeds	High
72	Wakefield	High
*73	City of London	High
*74	Barking and Dagenham	High
*75	Barnet	High
*76	Bexley	High
*77	Brent	High
*78	Bromley	High
*79	Camden	High
*80	Croydon	High
*81	Ealing	High
*82	Enfield	High
*83	Greenwich	High
*84	Hackney	High
*85	Hammersmith and Fulham	High
*86	Haringey	High
*87	Harrow	High
*88	Havering	High
*89	Hillingdon	High
*90	Hounslow	High
*91	Islington	High
*92	Kensington and Chelsea	High
*93	Kingston upon Thames	High
*94	Lambeth	High
*95	Lewisham	High
*96	Merton	High
*97	Newham	High
*98	Redbridge	High
*99	Richmond upon Thames	High
*100	Southwark	High
*101	Sutton	High
*102	Tower Hamlets	High
*103	Waltham Forest	High
*104	Westminster	High
*105	Westminster	High
106	Hampshire	Reference only

\*Some London borough location labels may be missing due to close proximity to other boroughs.

Contains Ordnance Survey data © Crown copyright and database right 2020

# Infections- number of cases of COVID-19 per 100,000 people across England

The epidemic is now no longer localised and is growing in all regions.

Detections of COVID-19 cases in England continued to increase in week 43 as is evident when comparing to week 42. Incidence and positivity rates remain highest in the North of England. By age group, cases rates were highest in the 20 to 29 year olds with decreases continuing to be noted in the 10 to 19 year olds. Positivity rates were highest in the 80+ year olds tested through both Pillar 1 (NHS and PHE testing) and in the 10 to 19 year olds tested through Pillar 2 (community testing).

Weekly rate of COVID-19 cases per 100,000 population tested under Pillar 1 and 2, by upper-tier local authority, England (box shows enlarged map of London area)



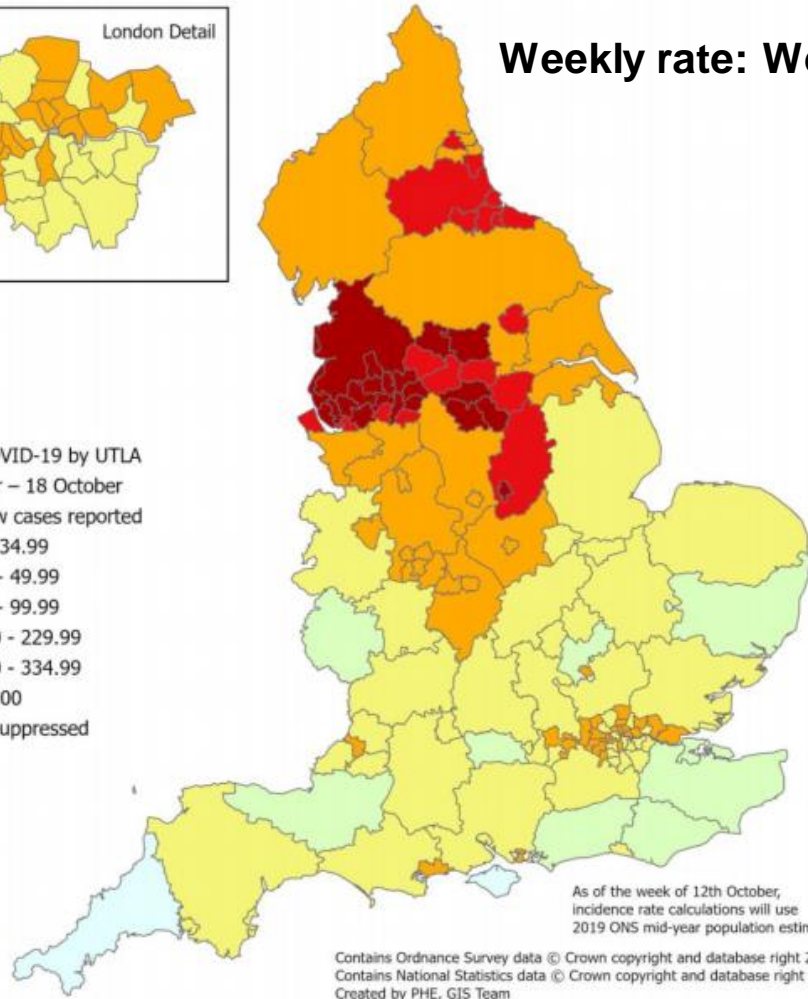
Weekly rate: Week 42



Weekly rate: Week 43

Rate of COVID-19 by UTLA  
12 October – 18 October

- No new cases reported
- 0.01 - 34.99
- 35.00 - 49.99
- 50.00 - 99.99
- 100.00 - 229.99
- 230.00 - 334.99
- ≥ 335.00
- Data Suppressed

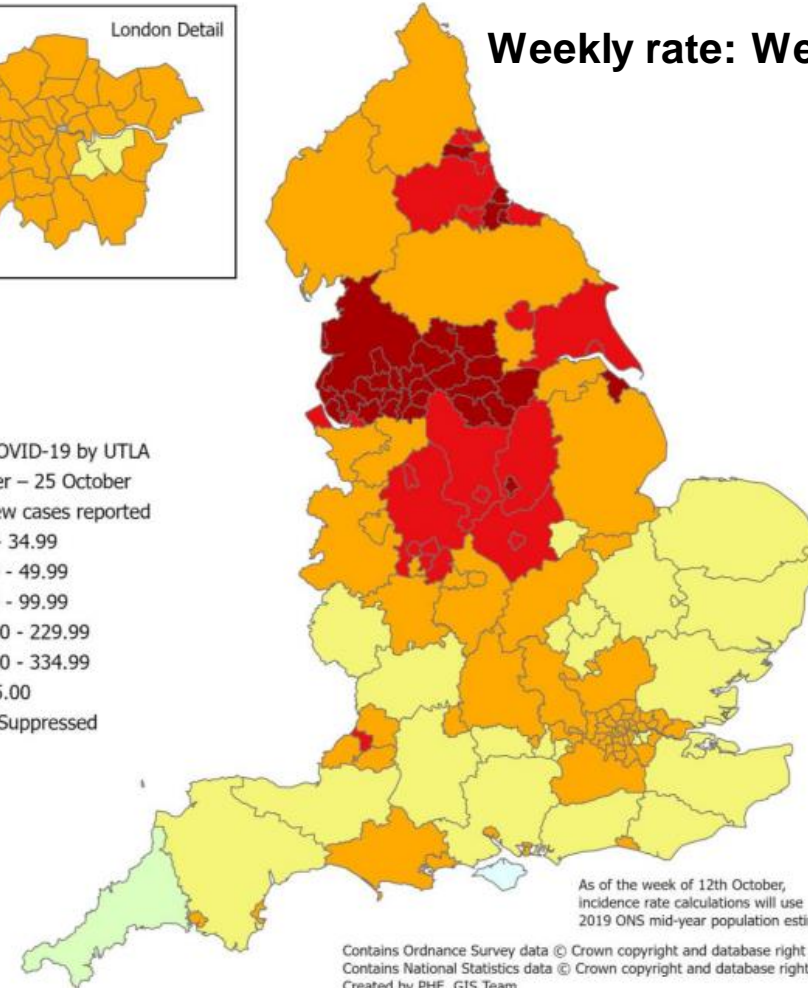


As of the week of 12th October, incidence rate calculations will use 2019 ONS mid-year population estimates.

Contains Ordnance Survey data © Crown copyright and database right 2020.  
Contains National Statistics data © Crown copyright and database right 2020.  
Created by PHE, GIS Team

Rate of COVID-19 by UTLA  
19 October – 25 October

- No new cases reported
- 0.01 - 34.99
- 35.00 - 49.99
- 50.00 - 99.99
- 100.00 - 229.99
- 230.00 - 334.99
- ≥ 335.00
- Data Suppressed



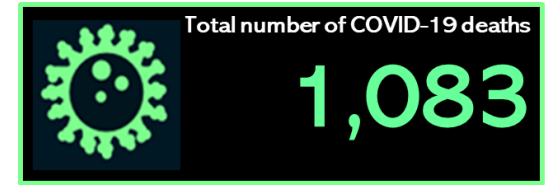
As of the week of 12th October, incidence rate calculations will use 2019 ONS mid-year population estimates.

Contains Ordnance Survey data © Crown copyright and database right 2020.  
Contains National Statistics data © Crown copyright and database right 2020.  
Created by PHE, GIS Team

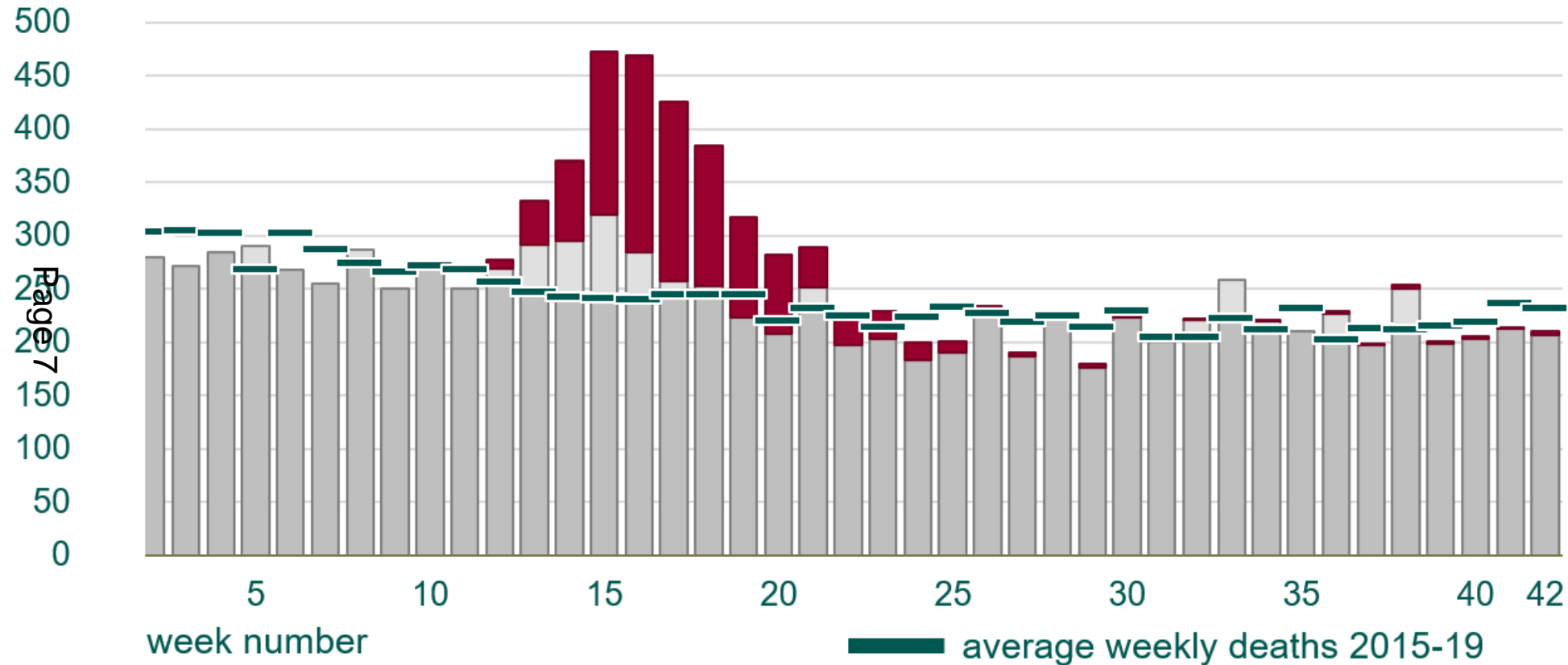


# Deaths

Deaths due to COVID-19 continue to be low, - the latest weekly figure is 4.  
Excess (extra) deaths are below the number we would usually see at this time of year.



All deaths in 2020 by week, with proportion where COVID-19 is mentioned



COVID-19 mentioned on the death certificate

Excess deaths continue to be lower than the 5-year weekly average, for this time of year.

COVID-19 not mentioned



ONS - Deaths registered weekly in England and Wales, provisional

Source: PHE ONS- Deaths registered weekly in England and Wales, provisional



This page is intentionally left blank