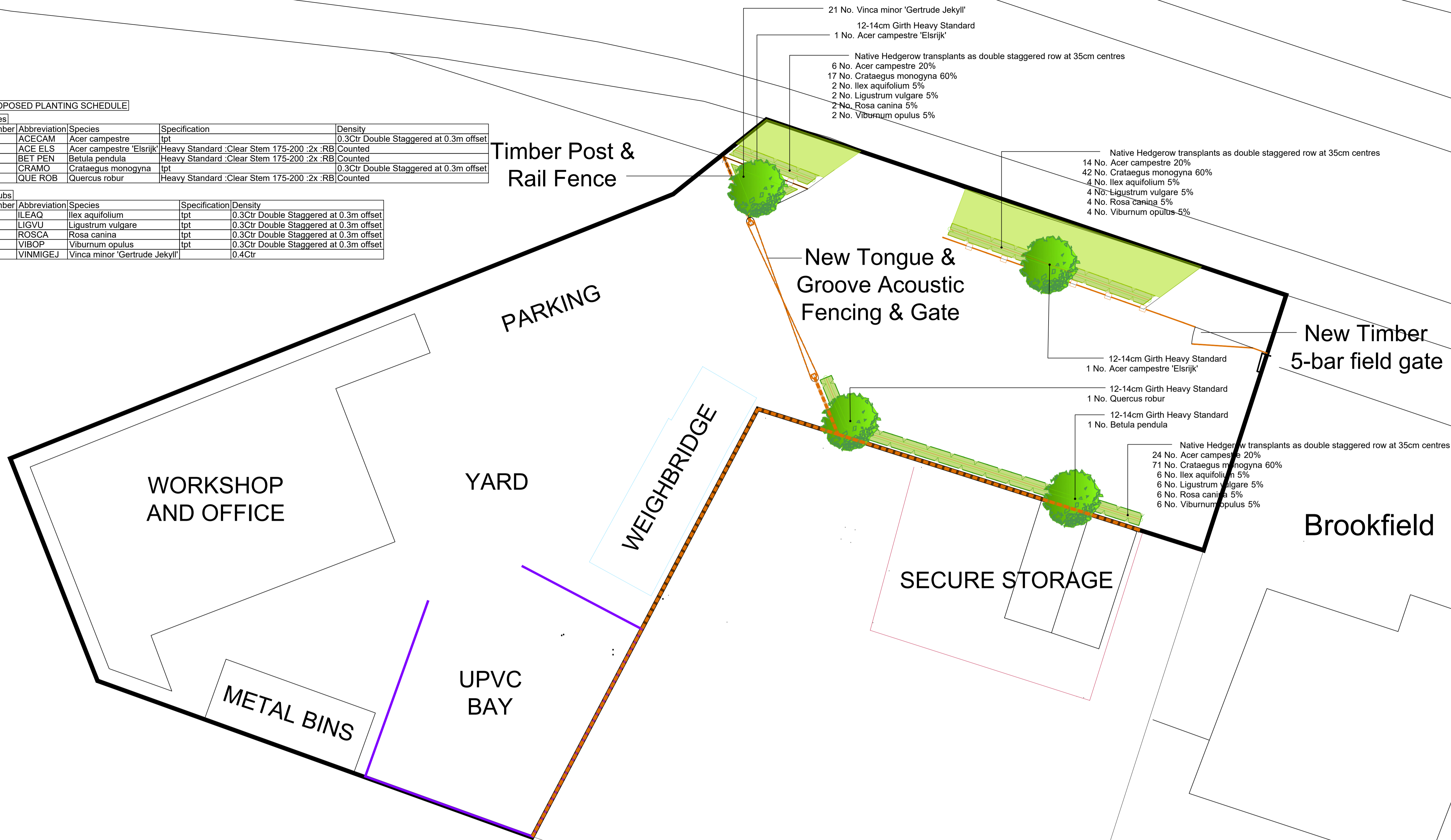


PROPOSED PLANTING SCHEDULE

Trees				
Number	Abbreviation	Species	Specification	Density
44	ACECAM	Acer campestre	tpt	0.3Ctr Double Staggered at 0.3m offset
2	ACE ELS	Acer campestre 'Elsrijk'	Heavy Standard :Clear Stem 175-200 :2x :RB	Counted
1	BET PEN	Betula pendula	Heavy Standard :Clear Stem 175-200 :2x :RB	Counted
130	CRAMO	Crataegus monogyna	tpt	0.3Ctr Double Staggered at 0.3m offset
1	QUE ROB	Quercus robur	Heavy Standard :Clear Stem 175-200 :2x :RB	Counted

Shrubs				
Number	Abbreviation	Species	Specification	Density
12	ILEAQ	Ilex aquifolium	tpt	0.3Ctr Double Staggered at 0.3m offset
12	LIGVU	Ligustrum vulgare	tpt	0.3Ctr Double Staggered at 0.3m offset
12	ROSCA	Rosa canina	tpt	0.3Ctr Double Staggered at 0.3m offset
12	VIBOP	Viburnum opulus	tpt	0.3Ctr Double Staggered at 0.3m offset
21	VINMIGEJ	Vinca minor 'Gertrude Jekyll'		0.4Ctr



PLANTING ESTABLISHMENT SPECIFICATION NOTES:

Check for below ground utilities before starting work. Install root barrier (e.g. Green Blue Urban ReRoot) as needed to protect utilities to comply manufacturer guidance. Note that root barrier should extend 300mm lower than the invert level of services.

For planting where there is existing hardscape, break out material, install edging where required and excavate sub-base to formation depth / volumes below:

Trees: 2m² area, allowing 0.9m depth
 Groundcover / Hedges: allow 0.45m depth
 Grass: allow 0.2m depth

Make sure the formation of excavations are decompacted and free-draining, then backfill with imported topsoil (Multi-purpose Grade).

Plant to comply with NPS / BS 3936 British Standard BS 3936-1. Do not plant during icy or frost conditions. Make sure all field grown (bare root / rootball) stock is planted inside the planting season typically November to end of March. Any planting outside this time period requires containerised plant stock and supplementary watering for healthy establishment.

Hedgerow transplants to be trench planted at centres as scheduled. Specimen trees are to be pit planted with a double stake support and adjustable tie. Container grown groundcover plants shall be pit planted at 45cm centres. Make sure plants are set to depth so that the finished soil level matches the established root collars. Firm plants into the soil without over compacting.

Cover surface of planting trench with composted bark mulch to 75mm even depth. This will reduce drought stress and weed competition for nutrients that may delay healthy plant establishment. Note: for groundcover planting area, do not apply bark mulch - leave plants to colonise the surface instead.

ESTABLISHMENT MAINTENANCE (All planting for at least 5 years post implementation)
 Re-firm all plant stock after strong winds or frost heave.
 Make sure plants are regularly watered during dry weather periods to ensure healthy establishment.
 Check and adjust plant ties, supports and guards regularly to prevent any bark damage.
 Check for damaged branches / stems, prune as appropriate for healthy establishment.
 Keep the bark mulched base of plants free from weed / grass growth by maintenance of mulch depth and hand weeding as needed. Avoid any use of strimmers or similar to prevent bark damage on plant stock.

LANDSCAPE STUDIO



1:100

PLANTING PROPOSALS_Revision A
 BOTLEY ROAD
 WEST END

1:100 @ a1 SCALE

AJM MATERIAL SALVAGE

LS2302A_LP1