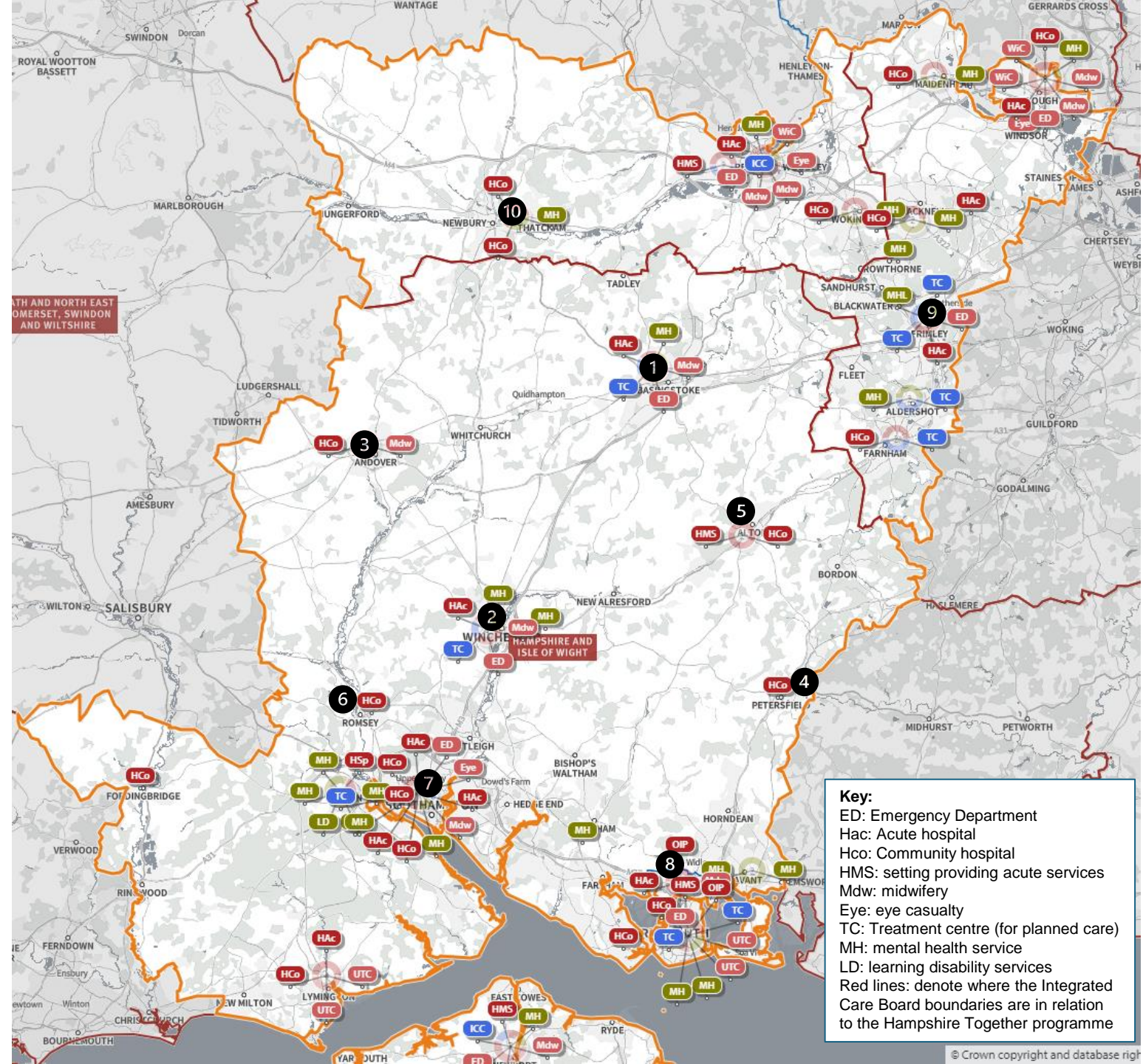


Map of services

No	Site and services provided
1.	Basingstoke and North Hampshire Hospital <ul style="list-style-type: none"> Emergency Department Maternity services (obstetric-led) Outpatients Diagnostics Therapies In-patients – both planned and unplanned
2.	Royal Hampshire County Hospital (Winchester Hospital) <ul style="list-style-type: none"> Emergency Department Maternity services (obstetric-led) Outpatients Diagnostics Therapies In-patients – both planned and unplanned
3.	Andover War Memorial Hospital <ul style="list-style-type: none"> Minor injuries clinic Maternity services – including midwife-led birthing unit In-patient rehabilitation Outpatients Diagnostics Therapies Day surgery unit
4.	Petersfield Hospital <ul style="list-style-type: none"> Urgent Treatment Centre In-patient rehabilitation Outpatients Diagnostics Therapies
5.	Alton Community Hospital <ul style="list-style-type: none"> In-patient rehabilitation Outpatients Diagnostics Therapies
6.	Romsey Community Hospital <ul style="list-style-type: none"> In-patient rehabilitation Outpatients Diagnostics Therapies
7.	Southampton General Hospital and Royal South Hants Hospital (including an Urgent Treatment Centre)
8.	Queen Alexandra Hospital
9.	Frimley Park Hospital
10.	West Berkshire Community Hospital (including a Minor Injuries Unit)

Maternity services – pre and post-natal care is provided in the sites above with maternity services and in a range of community settings including GP practices and patients' homes.



Key:
 ED: Emergency Department
 Hac: Acute hospital
 HCo: Community hospital
 HMS: setting providing acute services
 Mdw: midwifery
 Eye: eye casualty
 TC: Treatment centre (for planned care)
 MH: mental health service
 LD: learning disability services
 Red lines: denote where the Integrated Care Board boundaries are in relation to the Hampshire Together programme