

6FE North Whiteley Secondary School

Site Area Key

- Major Development Area
- School Boundary (6.95 Hectares)
- ▶ Vehicular Entrances (In/Out)
- ▶ Pedestrian Entrances (3no)
- (a)** Main School Block
- (b)** Sports Block
- (c)** Multi Use Games Area (MUGA)
- (d)** All Weather Pitches (Community)
- (e)** Grass Sports Pitch
- (f)** Soft Play
- (g)** Hard Play
- (h)** Staff and Visitor Car Park

Plan Room Key

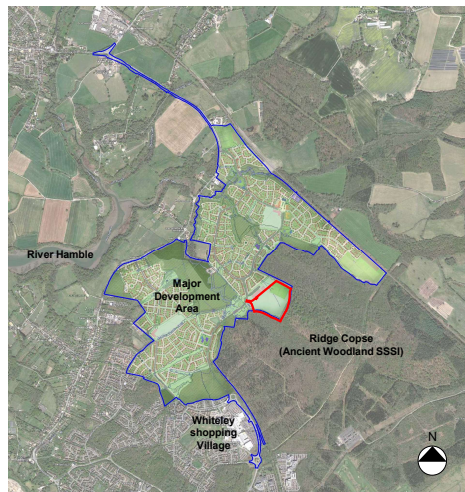
- 1 Dining Hall
- 2 Assembly Hall
- 3 Drama Studio
- 4 Learning Resource Centre
- 5 SEN Resource Provision
- 6 Kitchen and Servery
- 7 Void above Dining Hall
- 8 Void above Assembly Hall
- 9 Void above Drama Studio
- 10 Science Labs
- 11 Technology Workshops
- 12 Art Classrooms
- 13 General Teaching Classroom
- 14 Sports Hall
- 15 Changing Rooms
- 16 Activity Studio
- 17 Void over Sports Hall

PROJECT APPRAISAL

NTS @ A3

P11733-HCC-AB-00-DR-A-1100

December 2024



Location Plan



Proposed Site Plan

- Plan Room Type Key**
- General and Specialist Teaching
 - Plant, Circulation, Toilets etc.
 - Staff & Administration
 - Learning Resource Centre
 - Community Areas
 - Stores



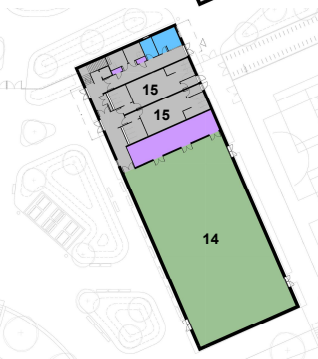
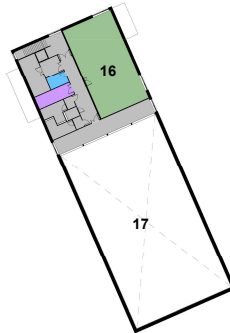
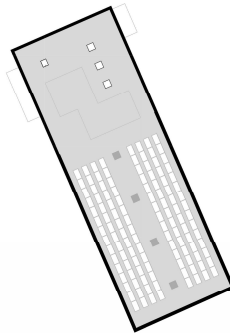
Proposed Second Floor Plan



Proposed First Floor Plan



Proposed Ground Floor Plan



View from Main Entrance



View from Courtyard