

Child Exploitation Hampshire Perspective

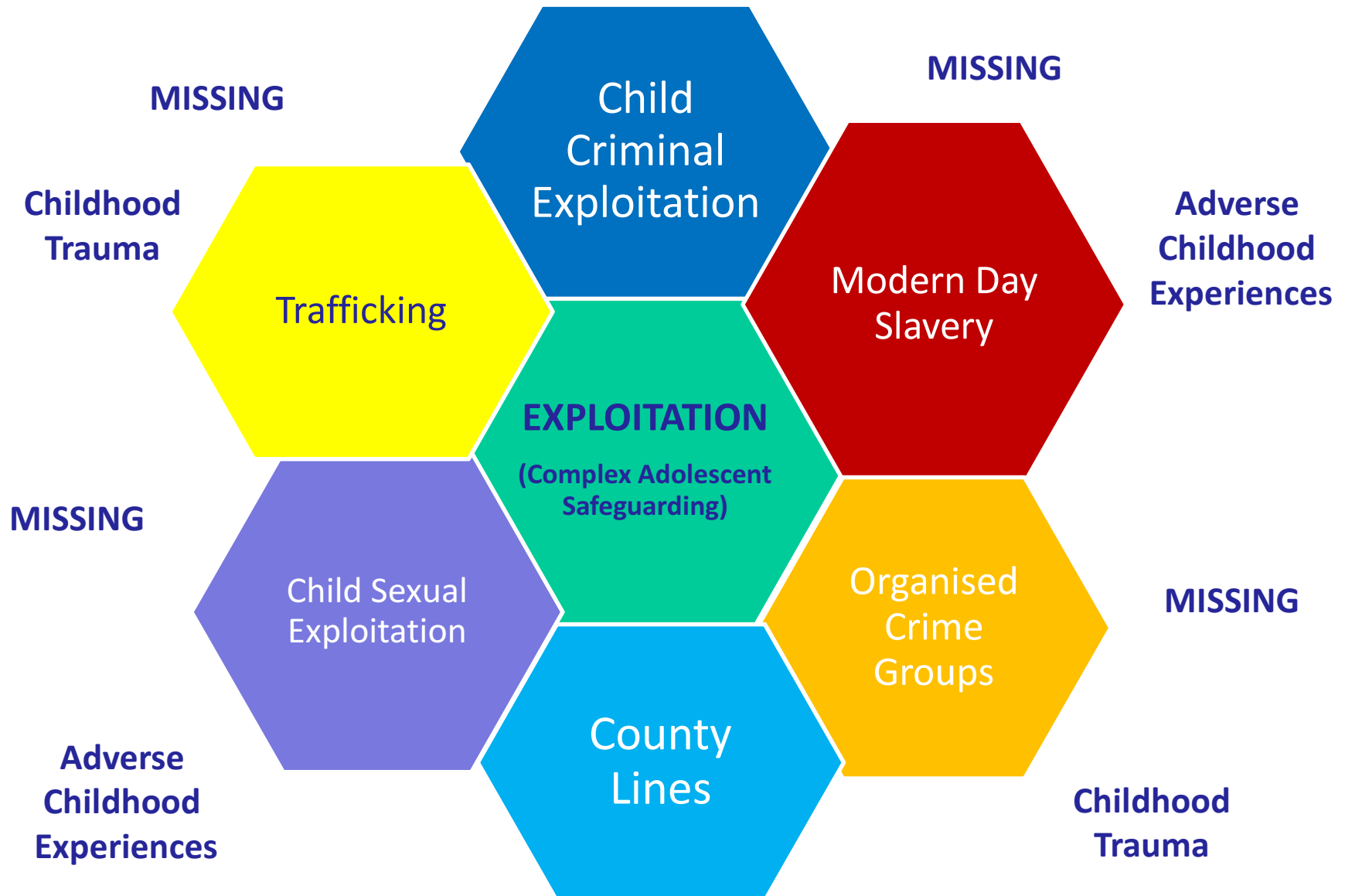


Hampshire Response to Exploitation

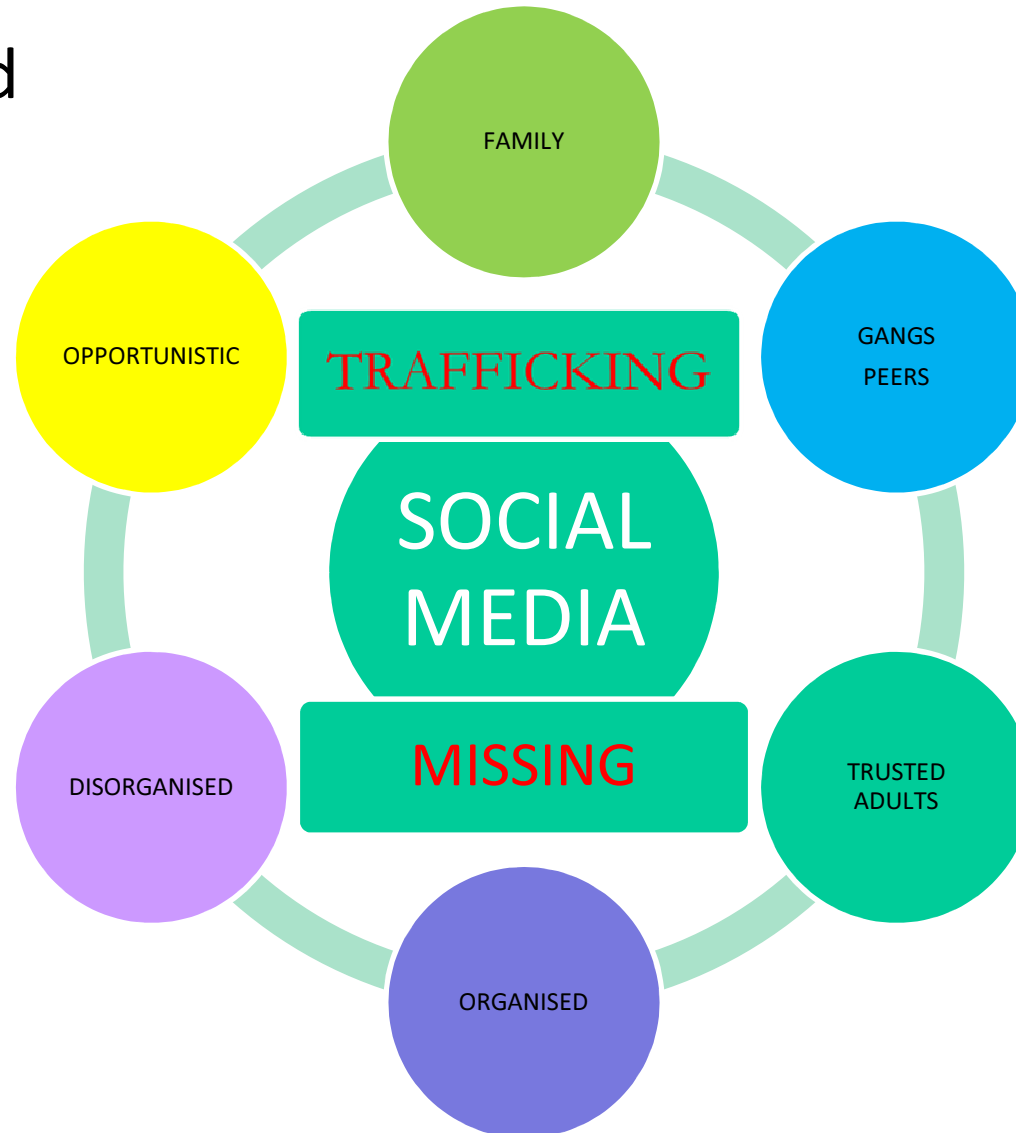
- Higher emphasis on children at risk from being Missing, Exploited or Trafficked
- Strategic response headed through 4 Local Safeguarding Childrens Boards
- Willow Team /MET Police Team - Multi agency response
- Pan Hampshire – Operational Group
- X4 Operational METs – identifies children at risk attended by key agencies

Long Term Impacts of Child Exploitation

- Distorted sexual boundaries
- PTSD - Mental health problems including:
 - Anxiety ~ Depression ~ Self Harm ~ Suicide..
- Poor ability to sustain positive relationships
- Teen Pregnancy/ STIs ~ Prostitution
- Drug and alcohol dependency - Poor physical health
- Failure to secure work
- Unstable adult relationships – separations & divorce – DV
- Next generation of issues - Poor parenting – Care System – children in care
- Criminal behaviours - YOT, YOI, Prison, MSV – Most Serious Violence, Criminal Record



Models of Child Exploitation



Push Factors for Exploitation

Push 

History of abuse at home

Domestic abuse at home

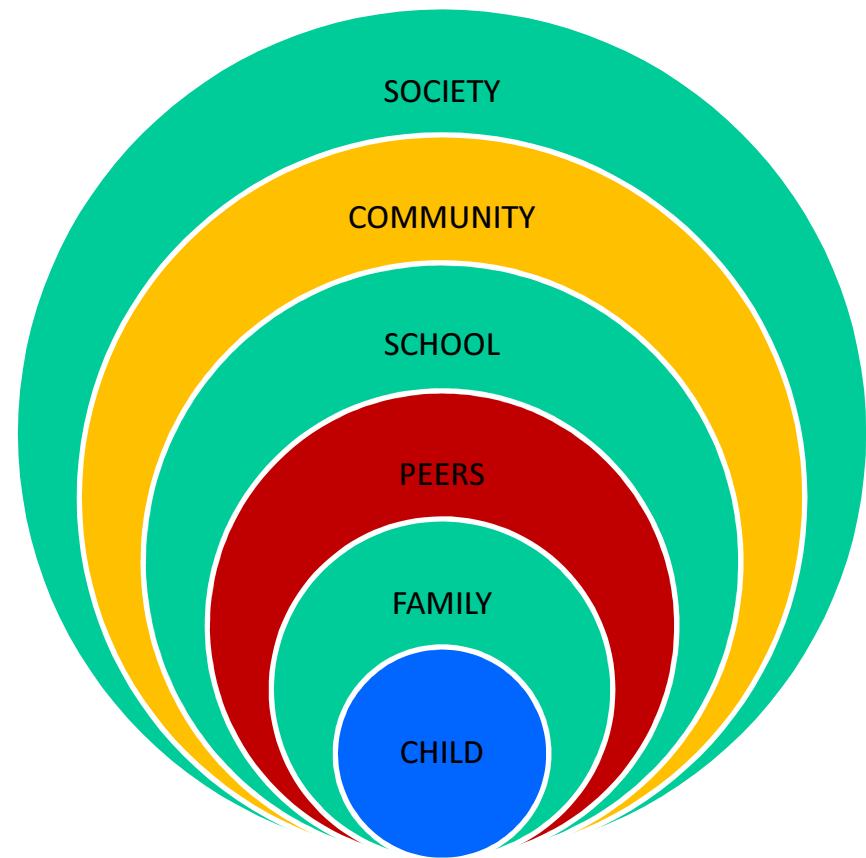
Parental vulnerabilities

Family breakdown

Learning difficulties

Emotional difficulties for the child

TOXIC TRIO & ACE's



Social Context Model

Small Minority - Large Impact

- 51% of CSE offenders were linked to drug intelligence and 63% were linked to violent offences.
- 27% increase in children being arrested for drug dealing 2017-2018
- MET say that there are 250 active gangs in London and about 25% of them are responsible for 66% of all gang related crime (age group 18-24)
- Over the last two years there have been 573 CSE incidents in Hampshire. Of which, 65% have been classified as crimes
- Southampton and Portsmouth accounted for 36% of CSE crimes over 2015 - 2017 ~ Havant active high numbers of repeat CSE victims
- NCA reports that the most common reason for missing episodes in children is abuse, neglect and conflict at home

South East – Regional Organised Crime Unit

- Individuals not gangs pose biggest threat
- Victims - mostly white British females aged 15
- Offenders – commonly white British male aged 18
- Online abuse is biggest thematic threat in the region
- Threats to tackling CSE – Poor information sharing, lack of partner working, not seeing children as children, Poor data handling & storing

Serious & Organised Crime - SOC

2014 - Cost to UK – 24 Billion

2015 – 50,000 individuals involved with 6,000 Groups identified

2016 – National Threat

2018 – 37 Billion - 2400 OCGs

National County Lines Coordination Centre (NCLCC)

8 Key Harm Areas

CSAE

Access to Firearms

Trafficking

Local Children linked to CCE

Out of area children linked to trafficking & CCE

Vulnerable Adults being criminally exploited

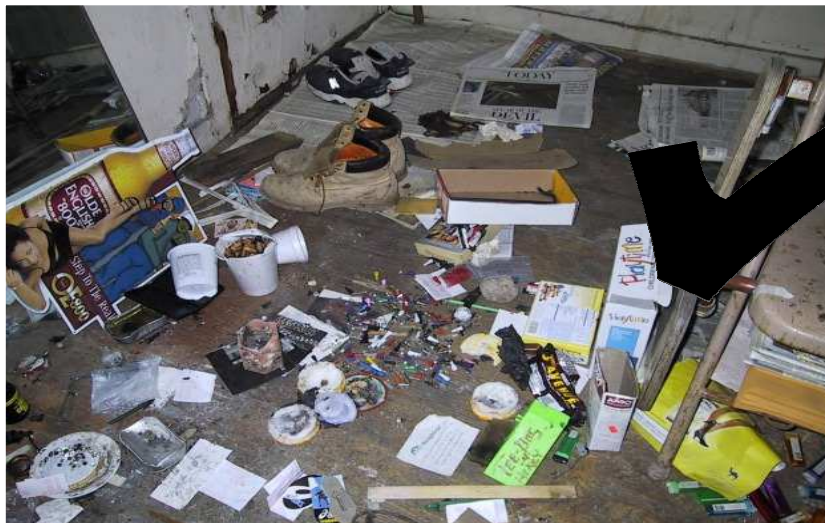
Cuckooed Addresses

Serious Physical Violence



Hampshire
County Council

Going Country...



Isn't what you
think it is...



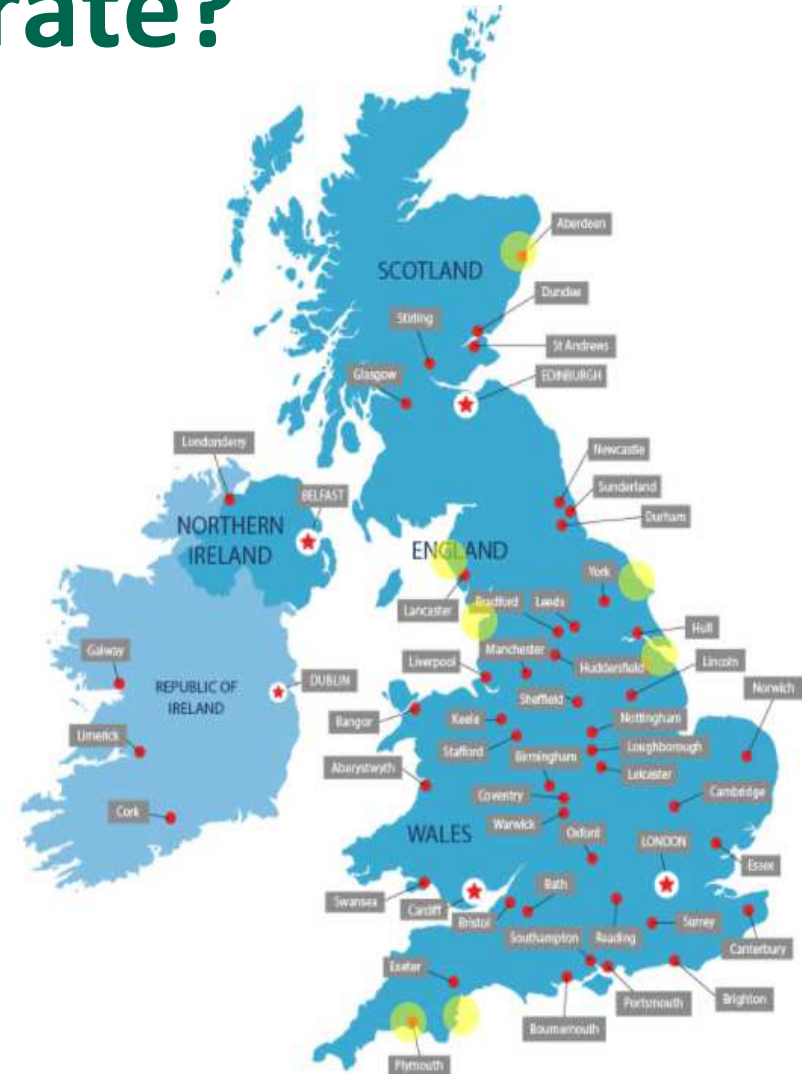
Hampshire
County Council

County lines

- It is a business model for organised criminal gangs
- Expanding their drug selling market
- Target vulnerable children/ adults, enticing them with money, drugs, alcohol, friendship and 'standing'
- Use them as drug mules to move drugs and money from local areas back to inner cities and vice versa
- They then entrap the young person, usually by robbing them of their 'takings', creating long term debt that's never repaid
- National issue but Hampshire is not immune due to its geography /proximity to large cities

Where do they operate?

- Anywhere there is the right market conditions, e.g less police presence, less rival groups, adequate transport links, the right levels for supply and demand
- Lines are found to operate out of London, Birmingham, Manchester, Liverpool and other major towns and cities.
- Manchester lines have been found in Scarborough, Grimsby, Fleetwood, Plymouth, Torquay, Barrow-in-Furness, Aberdeen amongst many others.
- Outlying towns and areas around Manchester linked by the Metrolink network have been subject to County Lines and are considered particularly vulnerable.



The Problem in Hampshire



18 Mapped networks:
- 2 lines using local youths
- 4 lines using OOF youths

29 Mapped networks:
3 lines using local youths
6 lines using OOF youths

25 Mapped networks:
- 6 lines using local youths
- 5 lines using OOF youths

CSD/Police – Safeguarding Approach

- All children in **Red Risk** as S47 CP investigation
 - Willow - Police - ICTA
- **Amber Risk** children being monitored by a professional
- **Green Risk** children – At risk from Grooming By Amber & Red Children
- All children likely to have been trafficked – NRM Process

Windows of Opportunity

Key windows exist which we can use to our advantage:

- Anything that fractures their perception vs reality:
- A situation goes too far (beaten up, threats, debts, stabbed, shot)
- Arrested
- First times going country and not being paid
- Seeing a loved one or friend hurt
- Taking on new responsibility
- New awareness
- Using sanction and support methods – including effective disruption methods
- Using our levels of cultural competency to demystify the reality to young person and parents
- Being social media aware and feeding back concerns
- Being present and approachable so that they can talk about issues



Looking Ahead

- These children very hard to engage
- Takes Months & Months to establish a 'Trusted Relationship'
- Need to tackle 'Social Context' issues
- Need to be 'Culturally Competent'
- Need for better intelligence sharing
- Early intervention in schools to be a priority



This Photo by Unknown Author is licensed under [CC BY-SA](#)
Hampshire
County Council