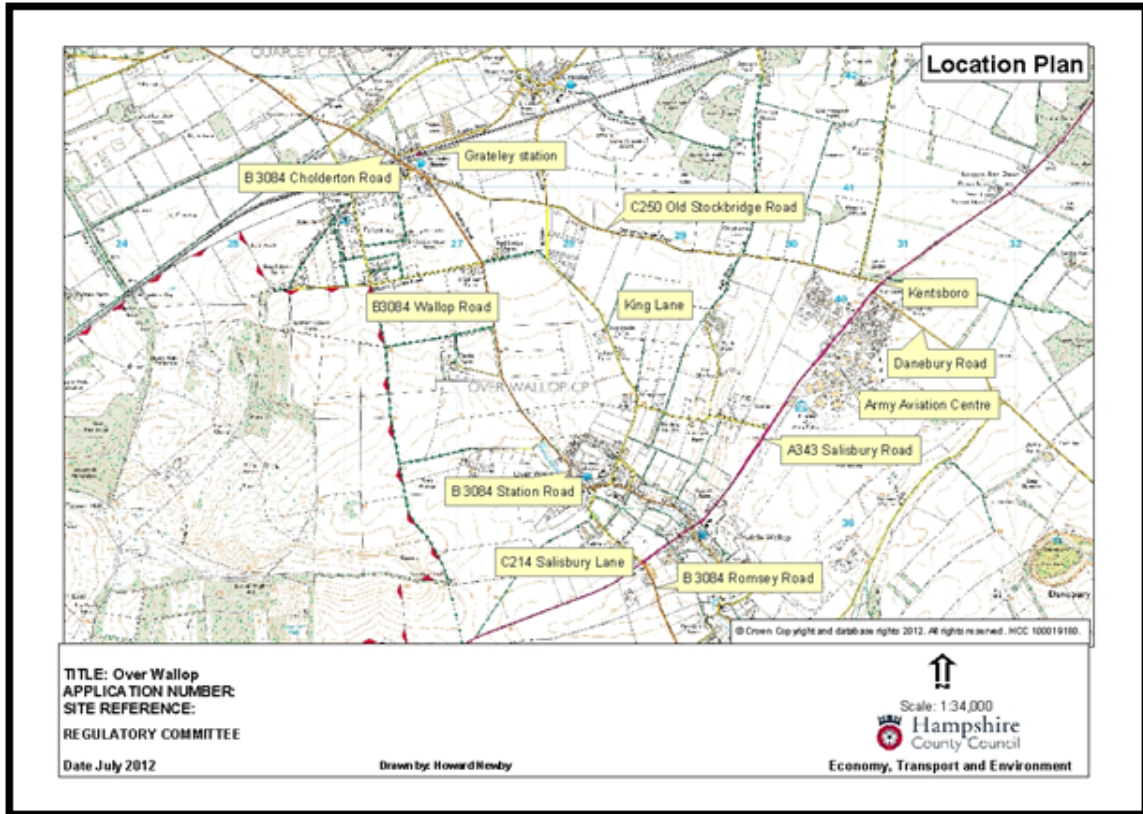
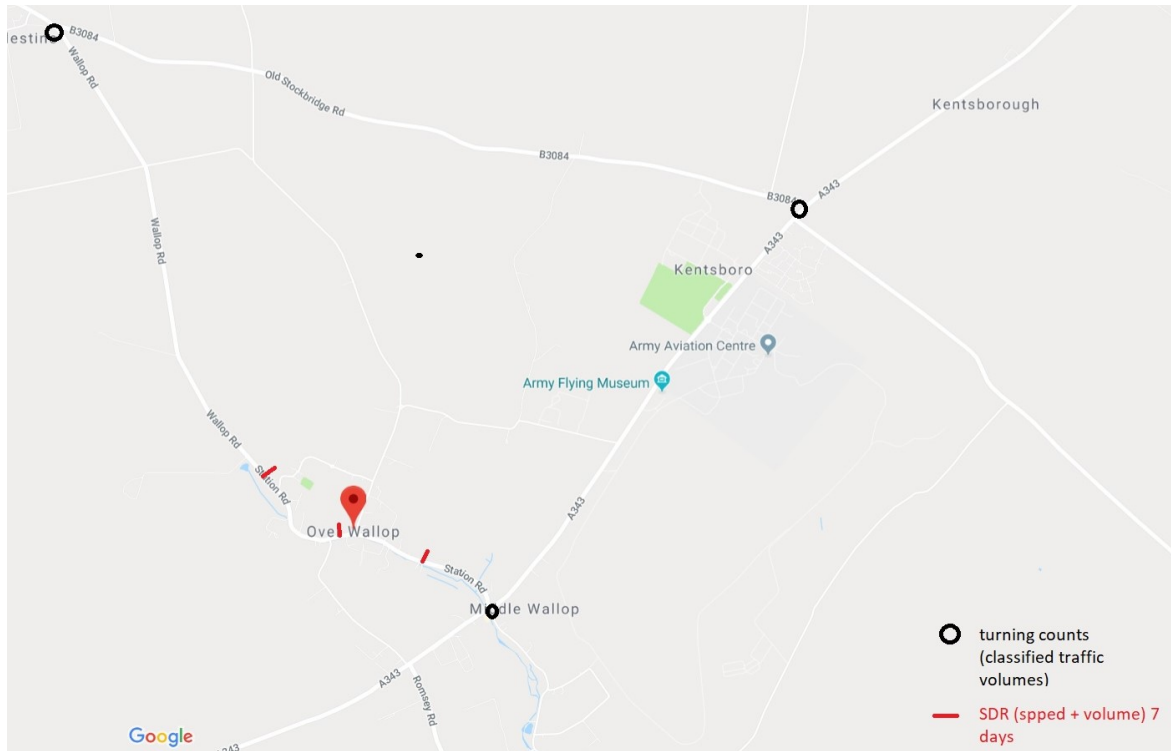


# Appendix 1

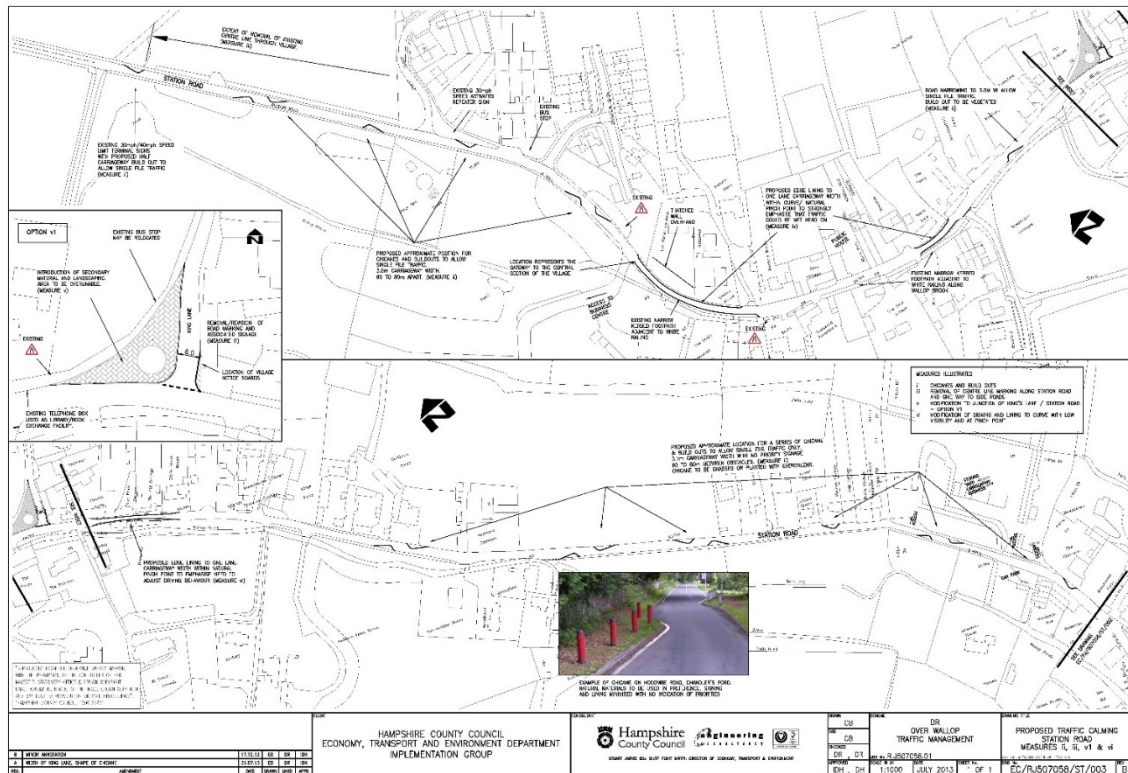
## LOCATION PLAN



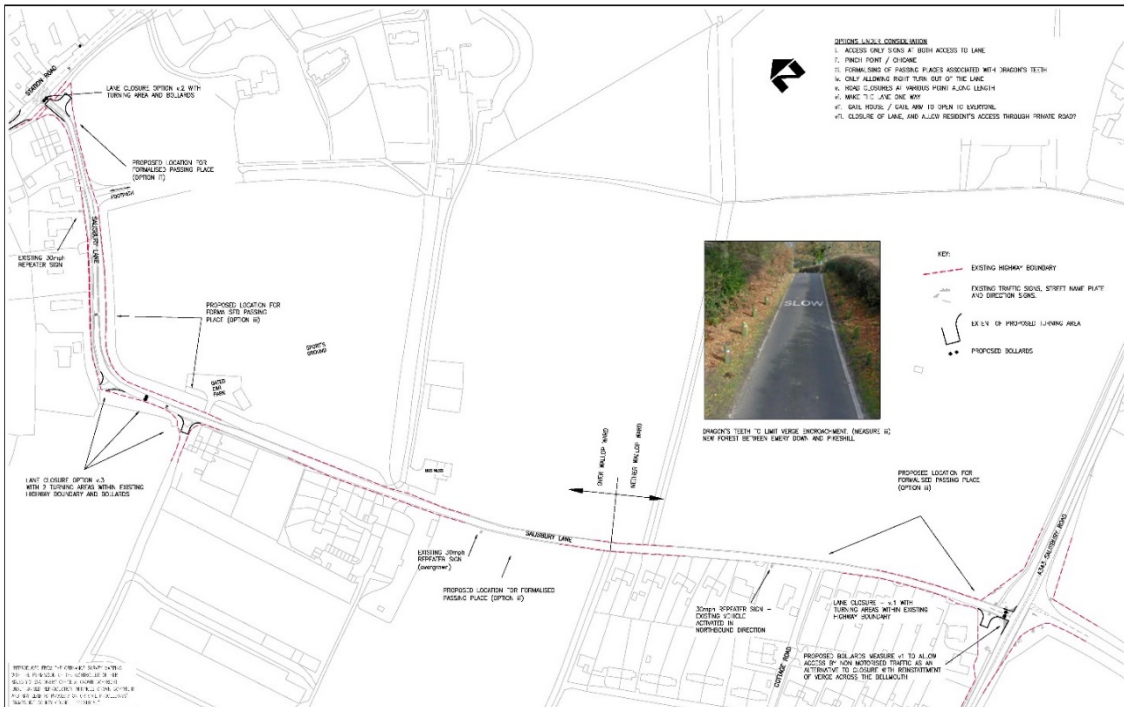
# SUGGESTION LOCATION OF TRAFFIC COUNTS



# SCHEME DRAWINGS



HAMPSHIRE COUNTY COUNCIL ECONOMY, TRANSPORT AND ENVIRONMENT DEPARTMENT IMPLEMENTATION GROUP				DR OVER WALLOP TRAFFIC MANAGEMENT PROPOSED TRAFFIC CALMING MEASURES 3, 4, v1 & v2
1. DATE OF ISSUE 2. DATE OF REV. 01 3. DATE OF REV. 02 4. DATE OF REV. 03	1. 11.11.13 2. 12.13 3. 12.13 4. 12.13	1. 11.11.13 2. 12.13 3. 12.13 4. 12.13	1. 11.11.13 2. 12.13 3. 12.13 4. 12.13	1. 11.11.13 2. 12.13 3. 12.13 4. 12.13
1. 11.11.13 2. 12.13 3. 12.13 4. 12.13		1. 11.11.13 2. 12.13 3. 12.13 4. 12.13		1. 11.11.13 2. 12.13 3. 12.13 4. 12.13



PROJECT NO: 15/004 DATE: 03/07/2015 SCALE: 1:1000 DRAWN BY: J. HAYES CHECKED BY: J. HAYES	HAMPSHIRE COUNTY COUNCIL ECONOMY, TRANSPORT AND ENVIRONMENT DEPARTMENT IMPLEMENTATION GROUP	 Hampshire County Council	PROJECT NO: 15/004 DATE: 03/07/2015 SCALE: 1:1000 DRAWN BY: J. HAYES CHECKED BY: J. HAYES	OVER MALLOP TRAFFIC MANAGEMENT PROPOSED TRAFFIC CALMING SAUSURBY LANE	PROJECT NO: 15/004 DATE: 03/07/2015 SCALE: 1:1000 DRAWN BY: J. HAYES CHECKED BY: J. HAYES
	EC/RJ507058/SA/002			1 OF 1	EC/RJ507058/SA/002
	DATE WHEN THIS PLAN FIRST BECAME EFFECTIVE: 03/07/2015			PROJECT NO: 15/004	PROJECT NO: 15/004