


General Notes

1. This drawing is © copyright Hampshire County Council 2017. No unauthorised reproduction of any kind is permitted.
2. No dimensions to be scaled from this drawing. Verify all dimensions prior to construction. Immediately report any discrepancies on the document to the Architect/Contract Administrator. This document shall be read in conjunction with associated models, specifications and related consultant's documents.
3. Drawing to be read with all relevant Structural, M&E, Public Health, Landscape, Civils and Interiors drawings and specifications.
4. This map is reproduced from Ordnance Survey material with the permission of Ordnance Survey on behalf of the controller of Her Majesty's Stationery Office © Crown copyright. Unauthorised reproduction infringes Crown Copyright & may lead to prosecution or civil proceedings (100019180) 2017.



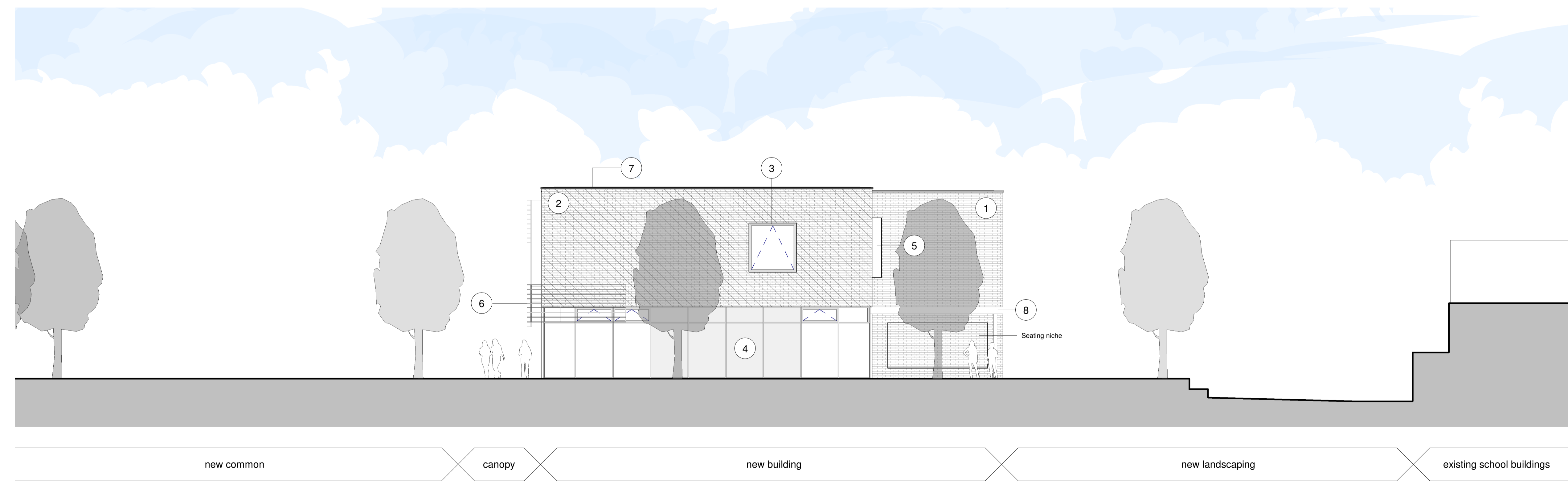
Notes:

FINAL FENESTRATION TO BE CONFIRMED

- Building Materials Legend**
- 1 Brickwork
 - 2 Textured Brickwork
 - 3 Aluminium Windows
 - 4 Opaque Glazing
 - 5 Metal Window Surround
 - 6 Timber Solar Shading
 - 7 Aluminium Capping
 - 8 Metal Canopy



1 3020 - GA North Elevation
1:100




2 3020 - GA East Elevation
1:100

1 0 1 2 5 Metres
Scale 1:100

Rev	Description	Date	By	Chkd
P1	Issued For Planning	20.09.19	GR	CG
P3	Issued For Planning - Revision 01	29.01.20	GR	CG

HCC Property Services,
Three Minsters House,
76 High Street, Winchester SO23 8UL
tel: (01962) 847801



New Building
Calthorpe Park Secondary School

Planning - North and East Elevations

SCALE
As indicated @ A1

DRAWN GR
CHKD CG

DRAWING No.
P11866-HCC-NB-XX-DR-A-3020 P3

SUITABILITY
code description
PLANNING