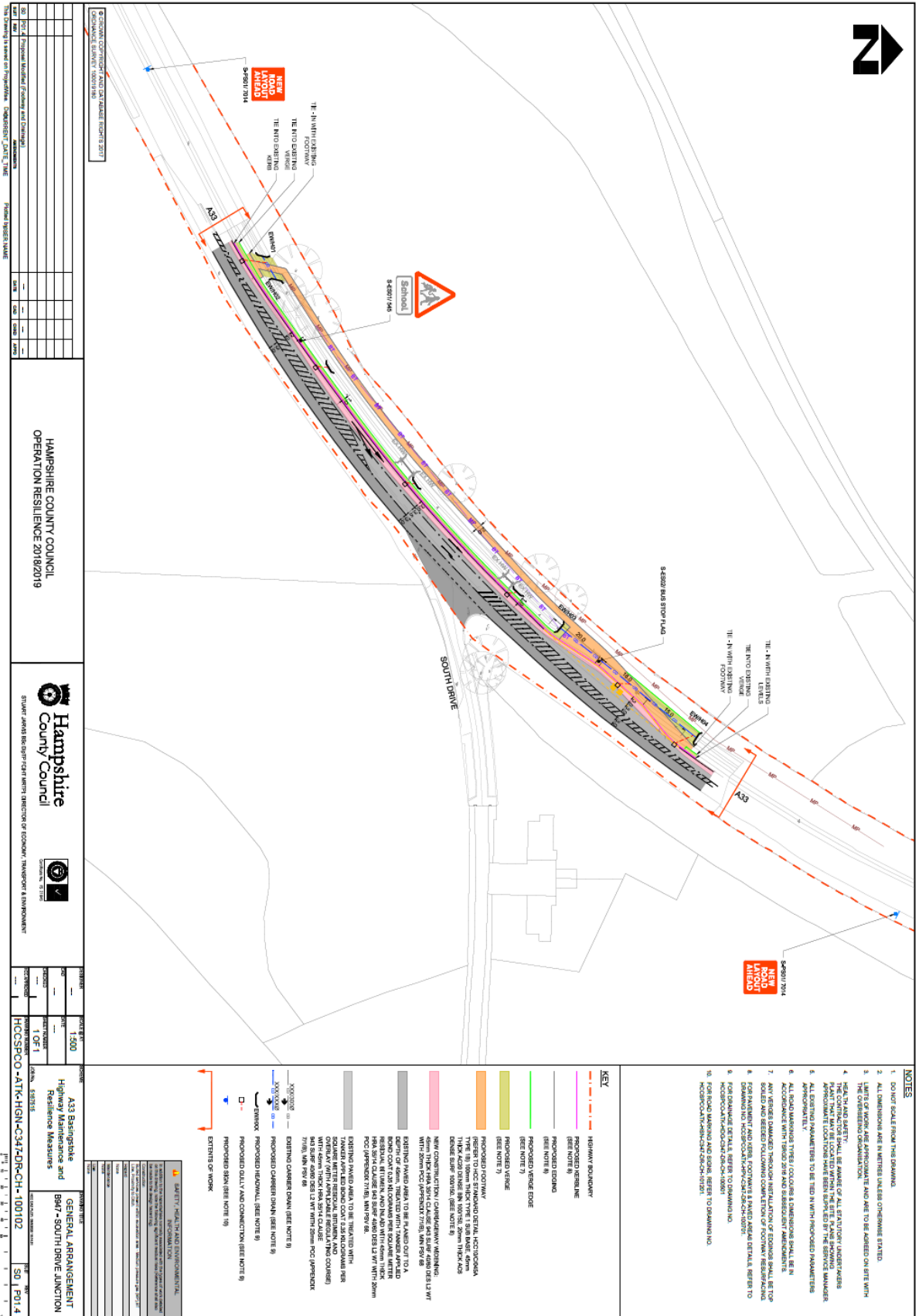


# Appendix 1 – General Arrangement Drawing



NO.	DESCRIPTION	DATE	BY	CHECKED BY	SCALE
1	Issue for Information	15/01/14	...	...	...
2	Issue for Approval	...	...	...	...
3	Issue for Construction	...	...	...	...

**HAMPSHIRE COUNTY COUNCIL**  
 OPERATION RESILIENCE 2018/2019



COUNTY COUNCIL  
 DEPARTMENT OF ECONOMIC, TRANSPORT & ENVIRONMENT

PROJECT	SCALE	DATE	BY	CHECKED BY
A33 Basildon	1:500	15/01/14	...	...
Highway Maintenance and Resilience Measures	1 OF 1	...	...	...

NO.	DESCRIPTION
1	DO NOT SCALE FROM THIS DRAWING
2	ALL DIMENSIONS ARE IN METRES UNLESS OTHERWISE STATED
3	LIMITS OF WORK ARE INDICATED BY RED DASHED LINES AND ARE TO BE ADHERED TO AT ALL TIMES
4	HEALTH AND SAFETY: ALL CONTRACTORS SHALL BE AWARE OF ALL SAFETY HAZARDS AND TAKE ALL NECESSARY PRECAUTIONS TO AVOID ACCIDENTS AND INJURY. ALL WORKERS MUST WEAR APPROPRIATE PERSONAL PROTECTIVE EQUIPMENT (PPE) AT ALL TIMES. ALL EXISTING PARAMETERS TO BE USED IN WITH PROPOSED PARAMETERS APPROVED BY THE SERVICE MANAGER.
5	ALL EXISTING PARAMETERS TO BE USED IN WITH PROPOSED PARAMETERS APPROVED BY THE SERVICE MANAGER.
6	ALL EXISTING PARAMETERS TO BE USED IN WITH PROPOSED PARAMETERS APPROVED BY THE SERVICE MANAGER.
7	ALL EXISTING PARAMETERS TO BE USED IN WITH PROPOSED PARAMETERS APPROVED BY THE SERVICE MANAGER.
8	ALL EXISTING PARAMETERS TO BE USED IN WITH PROPOSED PARAMETERS APPROVED BY THE SERVICE MANAGER.
9	ALL EXISTING PARAMETERS TO BE USED IN WITH PROPOSED PARAMETERS APPROVED BY THE SERVICE MANAGER.
10	FOR ROAD MARKING AND SIGN REFER TO DRAWING NO. HCC/PCO-ATK-HSN-C34-RD-CH-100102

KEY	DESCRIPTION
1	PROPOSED HIGHWAY BOUNDARY (SEE NOTE 8)
2	PROPOSED KERBLINE (SEE NOTE 8)
3	PROPOSED FOOTING (SEE NOTE 8)
4	PROPOSED VERGE EDGE (SEE NOTE 7)
5	PROPOSED VERGE (SEE NOTE 7)
6	PROPOSED FOOTWAY (SEE NOTE 7)
7	PROPOSED FOOTING DETAIL (HCC/PCO-ATK-HSN-C34-RD-CH-100102)
8	PROPOSED VERGE DETAIL (HCC/PCO-ATK-HSN-C34-RD-CH-100102)
9	PROPOSED FOOTWAY DETAIL (HCC/PCO-ATK-HSN-C34-RD-CH-100102)
10	PROPOSED KERB DETAIL (HCC/PCO-ATK-HSN-C34-RD-CH-100102)

**NOTES**  
 1. DO NOT SCALE FROM THIS DRAWING  
 2. ALL DIMENSIONS ARE IN METRES UNLESS OTHERWISE STATED  
 3. LIMITS OF WORK ARE INDICATED BY RED DASHED LINES AND ARE TO BE ADHERED TO AT ALL TIMES  
 4. HEALTH AND SAFETY: ALL CONTRACTORS SHALL BE AWARE OF ALL SAFETY HAZARDS AND TAKE ALL NECESSARY PRECAUTIONS TO AVOID ACCIDENTS AND INJURY. ALL WORKERS MUST WEAR APPROPRIATE PERSONAL PROTECTIVE EQUIPMENT (PPE) AT ALL TIMES. ALL EXISTING PARAMETERS TO BE USED IN WITH PROPOSED PARAMETERS APPROVED BY THE SERVICE MANAGER.  
 5. ALL EXISTING PARAMETERS TO BE USED IN WITH PROPOSED PARAMETERS APPROVED BY THE SERVICE MANAGER.  
 6. ALL EXISTING PARAMETERS TO BE USED IN WITH PROPOSED PARAMETERS APPROVED BY THE SERVICE MANAGER.  
 7. ALL EXISTING PARAMETERS TO BE USED IN WITH PROPOSED PARAMETERS APPROVED BY THE SERVICE MANAGER.  
 8. ALL EXISTING PARAMETERS TO BE USED IN WITH PROPOSED PARAMETERS APPROVED BY THE SERVICE MANAGER.  
 9. ALL EXISTING PARAMETERS TO BE USED IN WITH PROPOSED PARAMETERS APPROVED BY THE SERVICE MANAGER.  
 10. FOR ROAD MARKING AND SIGN REFER TO DRAWING NO. HCC/PCO-ATK-HSN-C34-RD-CH-100102

**KEY**  
 1. PROPOSED HIGHWAY BOUNDARY (SEE NOTE 8)  
 2. PROPOSED KERBLINE (SEE NOTE 8)  
 3. PROPOSED FOOTING (SEE NOTE 8)  
 4. PROPOSED VERGE EDGE (SEE NOTE 7)  
 5. PROPOSED VERGE (SEE NOTE 7)  
 6. PROPOSED FOOTWAY (SEE NOTE 7)  
 7. PROPOSED FOOTING DETAIL (HCC/PCO-ATK-HSN-C34-RD-CH-100102)  
 8. PROPOSED VERGE DETAIL (HCC/PCO-ATK-HSN-C34-RD-CH-100102)  
 9. PROPOSED FOOTWAY DETAIL (HCC/PCO-ATK-HSN-C34-RD-CH-100102)  
 10. PROPOSED KERB DETAIL (HCC/PCO-ATK-HSN-C34-RD-CH-100102)

**NOTES**  
 1. DO NOT SCALE FROM THIS DRAWING  
 2. ALL DIMENSIONS ARE IN METRES UNLESS OTHERWISE STATED  
 3. LIMITS OF WORK ARE INDICATED BY RED DASHED LINES AND ARE TO BE ADHERED TO AT ALL TIMES  
 4. HEALTH AND SAFETY: ALL CONTRACTORS SHALL BE AWARE OF ALL SAFETY HAZARDS AND TAKE ALL NECESSARY PRECAUTIONS TO AVOID ACCIDENTS AND INJURY. ALL WORKERS MUST WEAR APPROPRIATE PERSONAL PROTECTIVE EQUIPMENT (PPE) AT ALL TIMES. ALL EXISTING PARAMETERS TO BE USED IN WITH PROPOSED PARAMETERS APPROVED BY THE SERVICE MANAGER.  
 5. ALL EXISTING PARAMETERS TO BE USED IN WITH PROPOSED PARAMETERS APPROVED BY THE SERVICE MANAGER.  
 6. ALL EXISTING PARAMETERS TO BE USED IN WITH PROPOSED PARAMETERS APPROVED BY THE SERVICE MANAGER.  
 7. ALL EXISTING PARAMETERS TO BE USED IN WITH PROPOSED PARAMETERS APPROVED BY THE SERVICE MANAGER.  
 8. ALL EXISTING PARAMETERS TO BE USED IN WITH PROPOSED PARAMETERS APPROVED BY THE SERVICE MANAGER.  
 9. ALL EXISTING PARAMETERS TO BE USED IN WITH PROPOSED PARAMETERS APPROVED BY THE SERVICE MANAGER.  
 10. FOR ROAD MARKING AND SIGN REFER TO DRAWING NO. HCC/PCO-ATK-HSN-C34-RD-CH-100102

**KEY**  
 1. PROPOSED HIGHWAY BOUNDARY (SEE NOTE 8)  
 2. PROPOSED KERBLINE (SEE NOTE 8)  
 3. PROPOSED FOOTING (SEE NOTE 8)  
 4. PROPOSED VERGE EDGE (SEE NOTE 7)  
 5. PROPOSED VERGE (SEE NOTE 7)  
 6. PROPOSED FOOTWAY (SEE NOTE 7)  
 7. PROPOSED FOOTING DETAIL (HCC/PCO-ATK-HSN-C34-RD-CH-100102)  
 8. PROPOSED VERGE DETAIL (HCC/PCO-ATK-HSN-C34-RD-CH-100102)  
 9. PROPOSED FOOTWAY DETAIL (HCC/PCO-ATK-HSN-C34-RD-CH-100102)  
 10. PROPOSED KERB DETAIL (HCC/PCO-ATK-HSN-C34-RD-CH-100102)

**NOTES**  
 1. DO NOT SCALE FROM THIS DRAWING  
 2. ALL DIMENSIONS ARE IN METRES UNLESS OTHERWISE STATED  
 3. LIMITS OF WORK ARE INDICATED BY RED DASHED LINES AND ARE TO BE ADHERED TO AT ALL TIMES  
 4. HEALTH AND SAFETY: ALL CONTRACTORS SHALL BE AWARE OF ALL SAFETY HAZARDS AND TAKE ALL NECESSARY PRECAUTIONS TO AVOID ACCIDENTS AND INJURY. ALL WORKERS MUST WEAR APPROPRIATE PERSONAL PROTECTIVE EQUIPMENT (PPE) AT ALL TIMES. ALL EXISTING PARAMETERS TO BE USED IN WITH PROPOSED PARAMETERS APPROVED BY THE SERVICE MANAGER.  
 5. ALL EXISTING PARAMETERS TO BE USED IN WITH PROPOSED PARAMETERS APPROVED BY THE SERVICE MANAGER.  
 6. ALL EXISTING PARAMETERS TO BE USED IN WITH PROPOSED PARAMETERS APPROVED BY THE SERVICE MANAGER.  
 7. ALL EXISTING PARAMETERS TO BE USED IN WITH PROPOSED PARAMETERS APPROVED BY THE SERVICE MANAGER.  
 8. ALL EXISTING PARAMETERS TO BE USED IN WITH PROPOSED PARAMETERS APPROVED BY THE SERVICE MANAGER.  
 9. ALL EXISTING PARAMETERS TO BE USED IN WITH PROPOSED PARAMETERS APPROVED BY THE SERVICE MANAGER.  
 10. FOR ROAD MARKING AND SIGN REFER TO DRAWING NO. HCC/PCO-ATK-HSN-C34-RD-CH-100102

**KEY**  
 1. PROPOSED HIGHWAY BOUNDARY (SEE NOTE 8)  
 2. PROPOSED KERBLINE (SEE NOTE 8)  
 3. PROPOSED FOOTING (SEE NOTE 8)  
 4. PROPOSED VERGE EDGE (SEE NOTE 7)  
 5. PROPOSED VERGE (SEE NOTE 7)  
 6. PROPOSED FOOTWAY (SEE NOTE 7)  
 7. PROPOSED FOOTING DETAIL (HCC/PCO-ATK-HSN-C34-RD-CH-100102)  
 8. PROPOSED VERGE DETAIL (HCC/PCO-ATK-HSN-C34-RD-CH-100102)  
 9. PROPOSED FOOTWAY DETAIL (HCC/PCO-ATK-HSN-C34-RD-CH-100102)  
 10. PROPOSED KERB DETAIL (HCC/PCO-ATK-HSN-C34-RD-CH-100102)

**NOTES**  
 1. DO NOT SCALE FROM THIS DRAWING  
 2. ALL DIMENSIONS ARE IN METRES UNLESS OTHERWISE STATED  
 3. LIMITS OF WORK ARE INDICATED BY RED DASHED LINES AND ARE TO BE ADHERED TO AT ALL TIMES  
 4. HEALTH AND SAFETY: ALL CONTRACTORS SHALL BE AWARE OF ALL SAFETY HAZARDS AND TAKE ALL NECESSARY PRECAUTIONS TO AVOID ACCIDENTS AND INJURY. ALL WORKERS MUST WEAR APPROPRIATE PERSONAL PROTECTIVE EQUIPMENT (PPE) AT ALL TIMES. ALL EXISTING PARAMETERS TO BE USED IN WITH PROPOSED PARAMETERS APPROVED BY THE SERVICE MANAGER.  
 5. ALL EXISTING PARAMETERS TO BE USED IN WITH PROPOSED PARAMETERS APPROVED BY THE SERVICE MANAGER.  
 6. ALL EXISTING PARAMETERS TO BE USED IN WITH PROPOSED PARAMETERS APPROVED BY THE SERVICE MANAGER.  
 7. ALL EXISTING PARAMETERS TO BE USED IN WITH PROPOSED PARAMETERS APPROVED BY THE SERVICE MANAGER.  
 8. ALL EXISTING PARAMETERS TO BE USED IN WITH PROPOSED PARAMETERS APPROVED BY THE SERVICE MANAGER.  
 9. ALL EXISTING PARAMETERS TO BE USED IN WITH PROPOSED PARAMETERS APPROVED BY THE SERVICE MANAGER.  
 10. FOR ROAD MARKING AND SIGN REFER TO DRAWING NO. HCC/PCO-ATK-HSN-C34-RD-CH-100102