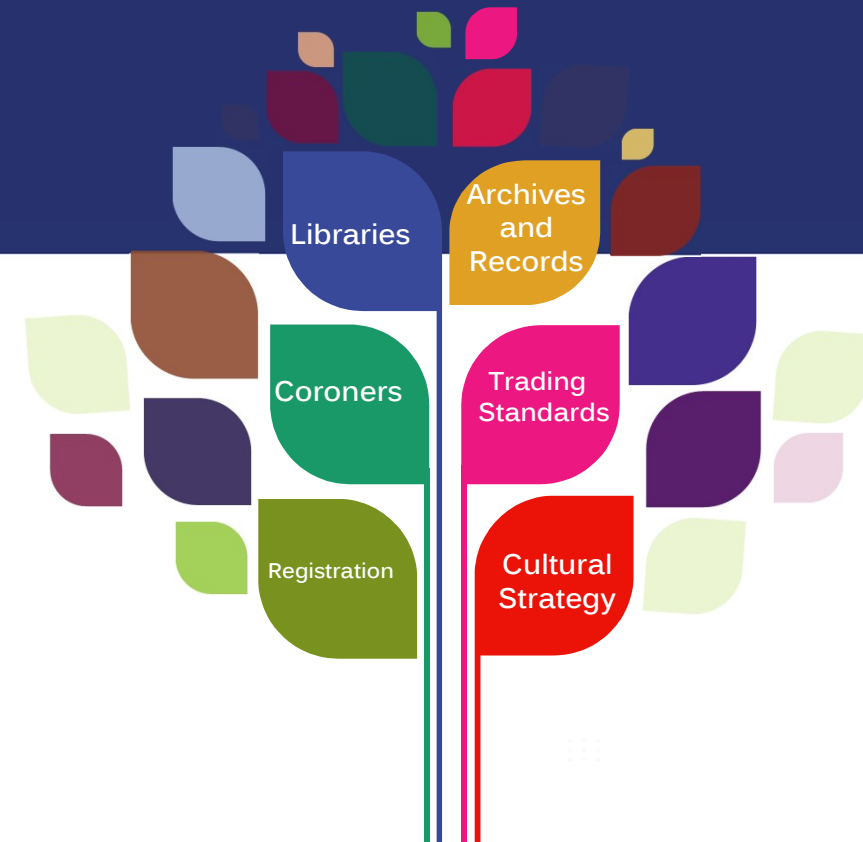




**Hampshire
Libraries**

Library Service Update

**Emma Noyce,
Culture and Information Services**



www.hants.gov.library    

Hampshire Library Service

- 40 Libraries
- Home Library Service
- School Library Service
- Learning in Libraries

Hampshire
Libraries



www.hants.gov.library    

Our Vision

A modern, relevant and sustainable library service that is valued by our communities and which plays an important role in the delivering Hampshire County Council's strategic goals through achieving three core priorities:

- Promoting Reading
- Supporting Healthy, Creative Communities
- Providing Access to Digital Services



All underpinned by a sound commercial strategy and business plan



www.hants.gov.library    

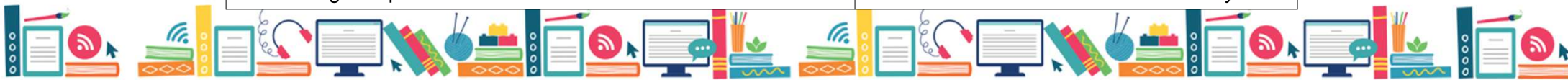
Part 1 – T21 Conclusion



www.hants.gov.library    

Transformation to 2021

	Key dates
Vision development	October 2018 to April 2019
Hampshire County Council's Balancing the Budget Consultation	5 June to 17 July 2019
Transformation Options Analysis and Consultation Preparation	April to December 2019
Library Service Public Consultation Part One	9 January to 18 March 2020
Executive Member Decision	28 July 2020
Library Service Public Consultation Part Two	3 to 17 August 2020
Chief Officer Decision	2 September 2020
Implementation of Executive Member Decision following pause for call in	September 2020 to March 2021
Staff Consultation	21 September to 5 November 2020
Staff Consultation Outcome	2 December 2020
'Closure' libraries closed to the public	31 December 2020
New opening hours formally in place (Covid-19 restrictions)	1 January 2021
Transition of Community Managed Libraries	31 March 2021
Staff changes implemented	1 May 2021



Savings Delivered

Delivery
Efficiencies
£263,000



Operations
£1,375,000



Delivering
Differently
£153,000



£1,791,000



www.hants.gov.library    



Part 2 – Covid 19 Response & Recovery



www.hants.gov.library    

Libraries in Lockdown

	2020												2021									
	March	April	May	June	July	August	September	October	November	December	January	February	March	April	May	June	July	August	September	October	November	
Browsing/lending																						
Ready Reads																						
Home Library Service																						
Go-Online																						
Learning In Libraries																						
School Library Service																						
Groups, Clubs and Activities																						
Digital Offer																						

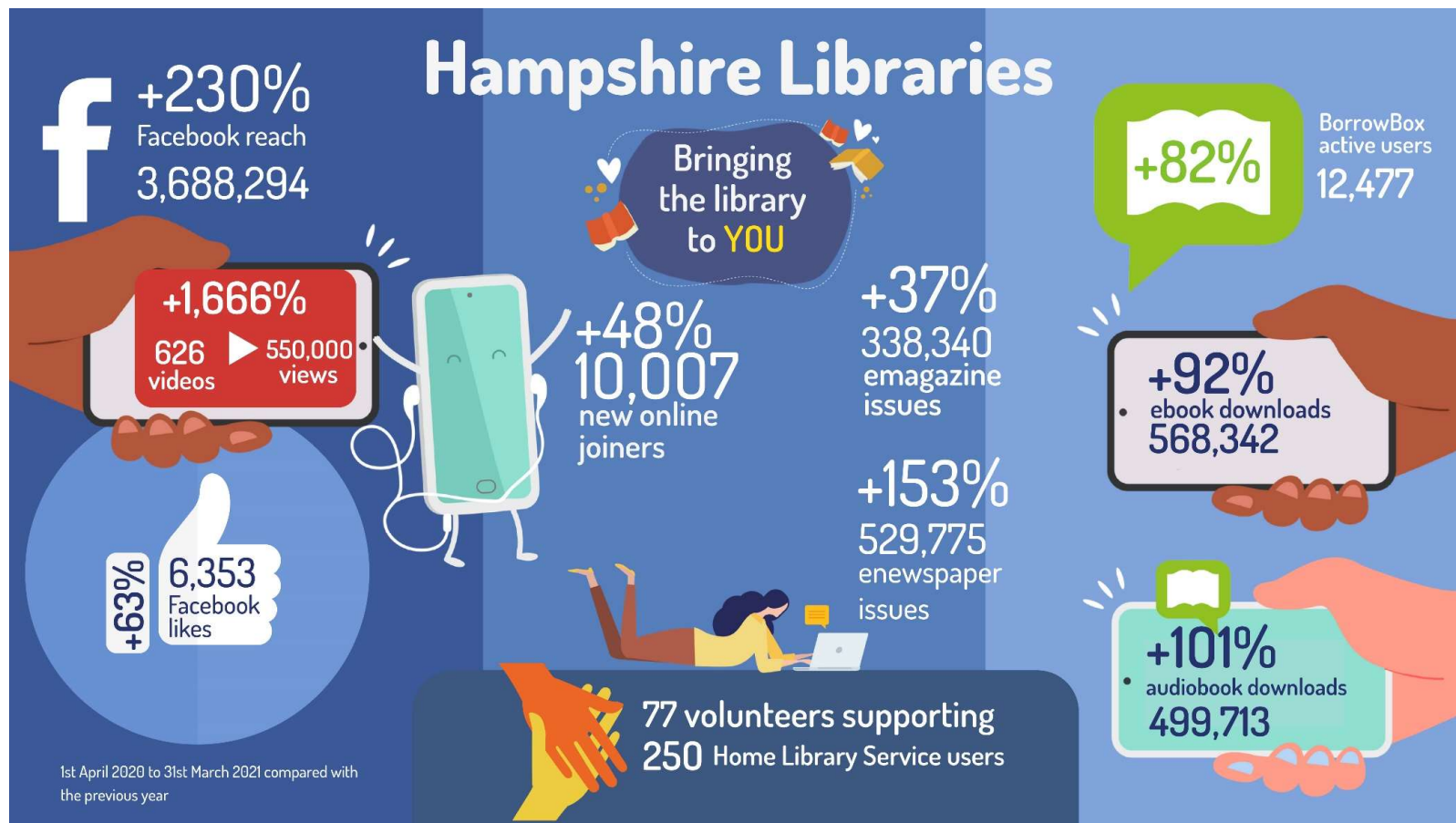


www.hants.gov.library [f](#) [t](#) [i](#) [n](#)

School Library Service 2020/2021

- **414,612** Physical Items on Loan to Schools
- Over **500** Group sets issued
- **32,600** views of author videos
- **1,109** active users of the 'Moodle'
- **18,637** pupils from **345** schools took part in our Book awards





Key Highlights



THE
READING
AGENCY



READING
FRIENDS
READING
WELL



www.hants.gov.library [f](#) [t](#) [i](#) [n](#)

Recovery

	September	
as a % of 2 years ago	Hampshire %	National %
Footfall	50	42
Libraries open	100	98
Physical book issues	73	74
eBook issues	190	163



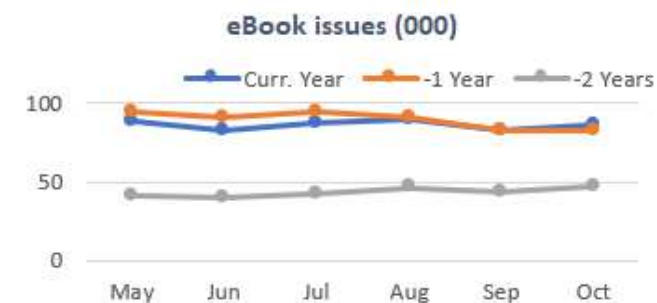
▼ 47% Curr Month Compared to Pre Covid



- 0% Curr Month Compared to Target

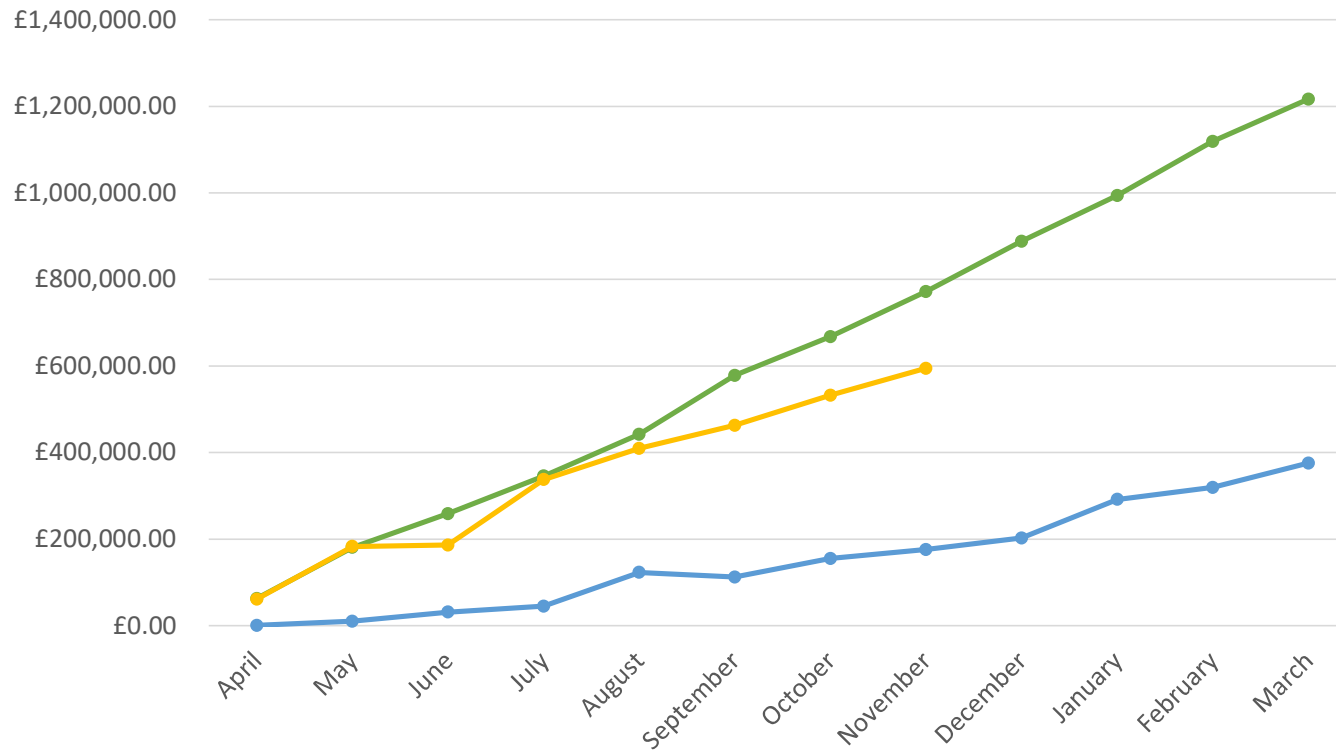


▼ 25% Curr Month Compared to Pre Covid



▲ 85% Curr Month Compared to Pre Covid

2021/22 BAU Baseline vs Actuals



Shortfall from BAU baseline monthly comparison for November:
£177,665

BAU Baseline SAP Actuals 20/21 SAP Actuals 21/22

Part 3 – A forward look



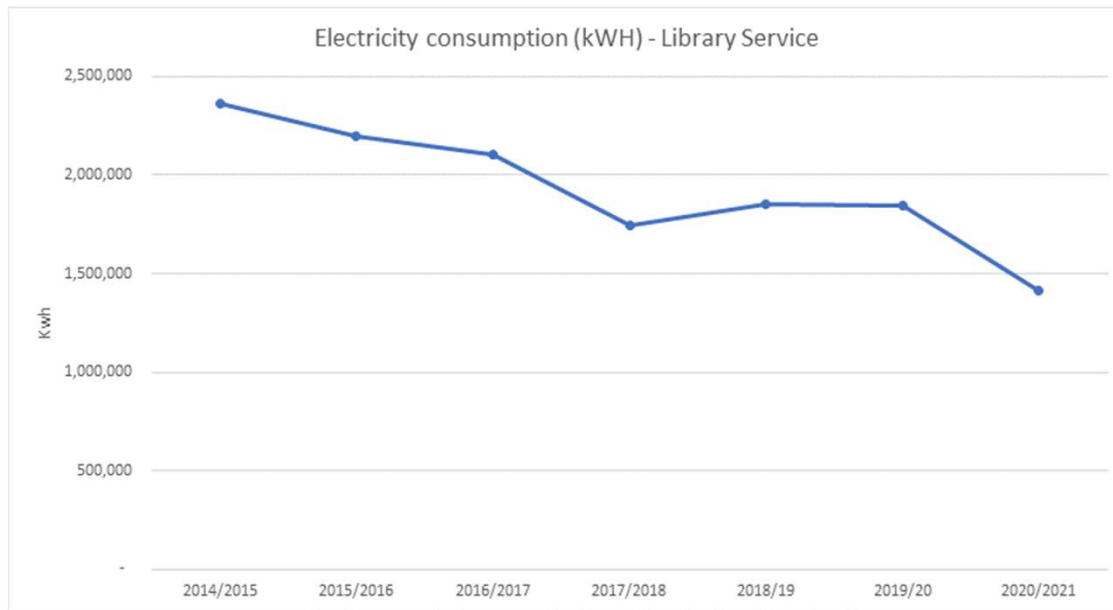
www.hants.gov.library    

Winchester Discovery Centre...



www.hants.gov.library [f](#) [t](#) [i](#) [in](#)

Libraries and Climate Change




www.hants.gov.library    

Domestic Abuse

- 50 staff have been trained across 17 libraries, LiL and HLS
- Collections of books and resources
- Barcodes
- Safe at Home link




"Thank you for putting books on display about domestic abuse. I don't know where to find them and don't feel I can ask. Would you be able to leave out books on emotional (non-violent) abuse, please. I will come in whenever I can."



Hampshire Libraries

Do you know someone who doesn't feel safe at home?
Not sure what to do?



Please take a barcode. The number underneath is the phone number for Hampshire Domestic Abuse Partnership's Advice Line and can be attached to books or magazines and passed on discreetly.

HAMPSHIRE DOMESTIC ABUSE PARTNERSHIP
Recognise it. Seek help.

Advice Line
03300 165 112



www.hants.gov.library    

Summary

- T21 programme now complete – SP23 in hand and we have a period of relative stability
- Covid has had significant impacts, but recovery going well
- Footfall and income key areas for attention
- Significant work across the service looking forward
- Think local, think Library



Questions?



www.hants.gov.library [f](#) [t](#) [i](#) [n](#)